

The Bridge

Bridging the Gap Between Today and Tomorrow

Vol 24 Issue 4

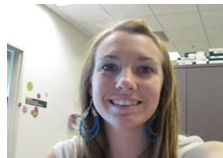
Grand Valley State University
Educational Support Program

February 2012

Student Spotlight

By: Ashleigh Zerbst

Mackenzie



Saulo



Natosha



Ashleigh



How long have you been a part of ESP ?

3 years

1 year

2 Years

4 Years

Why do you love working for ESP ?

I love ESP and being able to work with the advisors and peer mentors is such a joy.

I love the atmosphere and the advisors are so cool.

Interacting with all the students.

I love talking with people who are in all walks of life and sharing with them.

What is your Favorite Color ?

Orange

Blue

Pink

Baby Yellow

What is your favorite thing to do at ESP?

I love being able to work and talk with other students. I also really enjoy researching great ideas and putting together the newsletter.

Make reminder calls and chatting with the students.

Bonding with all the students and organizing.

I love interacting with all the students and editing the newsletter and making postcards.

Where is your hometown ?

Ionia, Michigan

Niles, Michigan

Grayling, Michigan

Dollar Bay, Michigan

What is your Major ?

Hospitality Tourism Management

Psychology for OT

Psychology

Integrated Science

What is your favorite thing to do on campus ?

I love hanging out with my friends and partaking in events put on by Students for Life.

I like to go to the Christian groups on campus and play tennis at the courts.

Attend all the art performances.

I love hanging out with my friends and going to watch movies in Kirkof.

What is something unique about you ?

I am the best vegetable slicer around!

I can tap my head and circularly rub my belly at the same time.

I can play 7 different instruments.

I can bake really well and I know how to make the traditional yooper pasty.

What is your Favorite Plant ?

Lily



Stinking Titan Arum



Gerbera Daisy



Daisy's



NOW Announcing our next cultural trip...

Jersey Boys

By: Natosha Beaman

Come and join in on the fun on Sunday, March 25th for our second cultural trip of the semester. We will be going to Kalamazoo to see the Broadway production of Jersey Boys. Jersey Boys is the story of how a group of blue-collar boys from the wrong side of the tracks became one of the biggest American pop music sensations of all time— Frankie Valli and the Four Seasons. They wrote their own songs, invented their own sounds, and sold 175 million records worldwide....all before they were 30! Jersey Boys was winner of the 2006 Tony Award for Best Musical. We will also enjoy dinner at The Parlour, an authentic 50's diner.



FAFSA Workshop Announcement!

By: Victoria Powers

ESP is hosting their annual FAFSA Workshop on Friday, February 10th from 4 to 6 pm in 113 Henry Hall. This is the perfect opportunity for you to complete your 2012-2013 FAFSA and ensure it is submitted before the priority deadline. ESP staff will be on hand to help you with any questions you have! Here's what you need to bring:

- * Your W2's or your last pay stub
- * Your parent/s' W2's or their last pay stub/s
- * Your FAFSA pin (we can look it up if you don't have it)
- * Your social security number

Why is it important to get your FAFSA done on time and correctly? The federal government has limited the amount of free money they give to colleges. The students who submit their FAFSA before the priority deadline are guaranteed to be evaluated for the MAXIMUM in free money possible! Need another benefit of attending this workshop? How about free food! ESP will be providing pizza and pop for every ESP student who comes in to complete their 2012-2013 FAFSA.

Be sure your there!

Crafty Valentine's Ideas "On The Cheap"

By: Marnie Parris-Bingle

Love Story Candle



Take a Mason Jar and any favorite story, cut hearts on both sides of paper and insert into jar. Tie with twine, put candle in jar and you have a personal message to a friend or loved one!

Valentines Treat Bag - Monkey (I'm Bananas for you) This is a super cute treat for any age. All you need is plastic baggies, cardstock for monkey and banner, and runt candies.



Dove Heart Chocolate Cookies Make a batch of peanut butter blossom cookies; follow this link for recipe <http://allrecipes.com/recipe/jif-peanut-butter-blossoms/detail.aspx>

And put a DOVE Candy heart in the middle and you have a fun Valentines peanut butter and chocolate treat!



ESP Serves Wounded Veterans

By: Melissa Selby-Theut



ESP honors its commitment to improving the lives of students it serves, their families, and those in larger community regularly through its partnership with Grand Rapids Community College. The TRiPS (TRiO Partners in Service) program provides students from GVSU and GRCC the opportunity to volunteer at a different local social service organization each month throughout the academic year. This January, we were fortunate enough to visit the Grand Rapids Home for Veterans. We have visited the Grand Rapids Home for Veterans each year since TRiPS was founded, and it's always a favorite!

With the INCREDIBLE work of the ESP peer mentors, ESP was able to collect enough donations to feed nearly 100 wounded and disabled military veterans. Good food can only be made better by a cutthroat game of B-I-N-G-O, so our students went to work calling numbers, passing out money, and checking cards. Hundreds of dollars in prizes and lots of laughs later, we left feeling fortunate to have had the opportunity to serve those who served our country.

If you're interested in volunteering for work experience, resume building, networking, or that warm-and-fuzzy feeling that you get when you've done something good, consider signing up for the next TRiP! In February we'll be serving persons afflicted with cancer, and in March we'll be working with the homeless in Grand Rapids' Heartside neighborhood. We'll round the year out with our annual TRiP to Baxter Community Center in April, where we will serve the poor by revitalizing the building and surrounding community. Be sure to check your e mail for details!

Events

By: Mackenzie Kindel

February 3: Euchre Tournament Rd 1, Peer Marquette 8-11:45pm

February 4: Euchre Tournament Rd 2, Peer Marquette 7-11:45pm

February 7: Managing Personal Finances, KC Room 2215 4-5 pm

February 3,4,10,11: GVSU Opera Theatre– The Light In The Piazza 7:30-10pm

February 13-19: Showing *Alice in Wonderland*, KC, Big Screen Theatre

February 15: Etiquette Dinner, Alumni House 6-8pm

February 17: Presidents' Ball, DeVos Place 5:30pm

February 20-26: Showing *Swing Vote*, KC, Big Screen Theatre

February 21: Getting a Good Night's Sleep, Niemeyer 6-7pm

February 23: GVSU Winter Career Fair, DeVos Place 1-5pm



Check Us Out on the Web!

www.gvsu.edu/esp

Add us as your Friend on Facebook: ESP Peer Mentors

**EDUCATIONAL SUPPORT PROGRAM
GRAND VALLEY STATE UNIVERSITY
1 CAMPUS DRIVE
239 STUDENT SERVICES BUILDING
ALLENDALE, MI 49401**

ESP Staff Directory

Melissa Selby-Thuet

Director

Marnie Parris–Bingle

Advisor

Victoria Powers

Advisor

Lolita Salindong

Office Coordinator

SSO Staff

Mackenzie Kindel

Saulo Ortiz

Natosha Beaman

Ashleigh Zerbst

The Bridge

Written and edited

by the ESP & SSO staff.

Published by **Mackenzie**

Kindel

This Publication and all activities are
federally funded through a grant
from the U.S. Department of
Education.

