

A photograph of a brick building with a tower, trees, and a path under a blue sky with clouds. The building has a prominent tower on the left side with two red brick chimneys. The main building is made of red brick with white trim around the windows. There are several green trees in front of the building, and a paved path leads from the foreground towards the building. The sky is bright blue with a few white clouds.

# Housing & Residence Life

Grand Valley State University



# Housing Staff & Roles

## Within Residential Building/Community

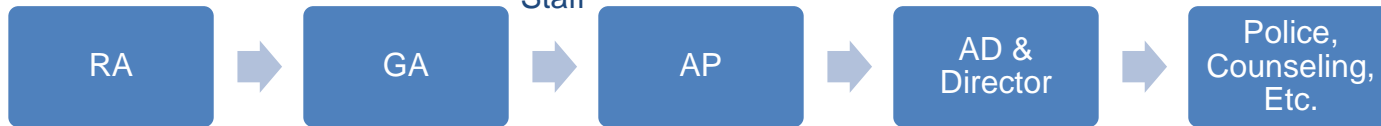
Resident Assistant (RA)  
Assistant Living Center Director (ALCD)  
Living Center Director (LCD)

## Central Housing Office

Director of Housing & Residence Life  
Assistant & Associate Directors  
Customer Service Representatives  
Assignment Coordinators  
Occupancy, Marketing & Facilities Staff

## On-Call Duty Process

Emergencies- call 911  
Non-emergency (noise complaint, party, etc.), call the duty phone number & start the chain of command



# Freshman Housing Options

## **NORTH CAMPUS**

(Rate Includes 14+ Meal Plan)

- **Traditional Style**
- **Cluster Style**
- **Suite Style**
- **1 Bedroom Apartment Style**
- **2 Bedroom Apartment Style**

## **SOUTH CAMPUS**

(Meal Plans Selected and Purchased Individually)

### **Living Learning Communities**

- Honors
- Women in Science & Engineering
- International House
- Movement Science House
- Art Housing
- Gender Justice House





# Freshman Housing Assignments

- Application opened in September
- Assignments made in order of application date
- Roommate requests granted if mutual, received by deadline, and roommate choice is ranked higher than building choice
- A matched roommate pair is placed based on the earlier of the two application dates
- Room assignment information will be sent via email starting in mid-June
- Room assignments will continue to be made throughout the summer months





# Roommate Issues

## Communication

- Call, text, Facebook, and/or e-mail prior to arrival
- Remember - online profiles can be deceiving; meet in person if possible!

## Coordination

- Who is bringing what (Refer to Move-In Guide)
- Cleaning schedule and general expectations and considerations

## Conflict Mediation

- Address concern with roommate!
- Discuss issues/mediate with RA
- Meet with LCD or ALCD
- Room Change

# Campus Dining

- Cost of meal plan (10+, 14+ or 19+) is \$1,475/semester
- 14+ Meal Plan is included in semester housing rate for Traditional, Suite, Cluster, 1BR and 2BR Apt Freshmen Styles
- 14+ Meal Plan may be purchased ala cart for student living in Apartments

**“10-14-19” = meals per week “+” = dining dollars per semester**

Plan	Meals/Week	Dining Dollars	Average Cost/Meal	Cost of Plan
19+	19/week	\$150	\$4.65	\$1,475
<b>14+</b>	<b>14/week</b>	<b>\$250</b>	<b>\$5.83</b>	<b>\$1,475</b>
10+	10/week	\$350	\$7.50	\$1,475

## Meals (10/14/19 per week)

- Meals can be used at any Campus Dining locations, including C-Stores. Starbucks, Argo Tea, Which Witch, Einsteins and Qdoba take Debit Dollars only.
- Up to four meals may be used per day. Meals do not carry over week to week.

## Dining Dollars (+)

- Works like a debit card, each time purchase is made, the money is subtracted from account. Dining Dollars carry over through end of Winter semester.
- Dining Dollars can be used at any Campus Dining location. Starbucks, Argo Tea, Which Witch, Einsteins and Qdoba take Debit Dollars only.

# Success Center At North C

## Located in North C Living Center:

- In the heart of North Campus
- Available to all first year students
- Open Monday-Friday
- Appointments and walk-in services

In accordance with *High Impact Experiences* and the *Blueprint for Student Success*

## One-stop place for:

Student Academic Success Center  
Academic Advising  
Career Counseling  
Disability Support Resources  
Financial Aid  
Tutoring  
Study Abroad





# Campus Health Center

[www.gvsu.edu/campushealth](http://www.gvsu.edu/campushealth)

General medical care, including immunizations, women's health services & physical exams

Appointments and walk in services available

Accepts all major health insurance plans/will bill your insurance

The center is near the water tower, just south of Laker Village

GVSU student health insurance policies available – [www.gvsu.edu/riskmanagement](http://www.gvsu.edu/riskmanagement)





# Move-In Process



# Amenities

## Furniture/Appliances

- Twin extra long mattresses
- Loftable furniture
- Students may have one microwave and one refrigerator per traditional or suite style unit
- Refrigerators are provided in apartment-style and apartment units

## Mail

- One mailbox per room or apartment
- Students are notified via email of package delivery and pickup location

## Maintenance

- Maintenance available for facilities concerns
- Students may submit work order requests online



# Amenities

## Laundry

- Each building has access to their own laundry room
- Laundry cards issued at move-in, pre-loaded with 90 cycles for year

## Internet

- All units equipped with both wireless and high-speed ethernet access
- No wireless routers are permitted

## Cable

- Digital cable TV service provided in all buildings
- 90+ stations provided (25 HD channels)
- TV with a QAM tuner and coaxial cable needed





# Student Credentials

**-Student ID Card-**

**-Access Card-**

**-Brass Key-**

**-Laundry Card-**

Notify Community Desk of lost access card or brass key immediately.

**Loan and replacement costs range from \$10-\$85.**

(billed to student account)

# Policies & Protocol

## Alcohol

- No alcohol (or containers/paraphernalia) in freshman areas on north campus
- On campus apartment residents who are 21 or over may have alcohol in their units

## Bikes

- Must be stored/locked outside
- Encouraged to register with campus police

## Fire Safety

- No smoking in or 25ft from any campus building
- No candles/incense – lit or unlit
- See Residential Services Guide for prohibited cooking appliances

**Pets:** Non-predatory fish ONLY

**Guests:** 2-consecutive nights, with roommate(s) permission

**See “Policies A-Z” on the Housing Website**

# Looking Ahead: Upperclass Housing

Apartments, Living Learning  
Communities, Downtown  
Housing

- Application Opens in September
- **Two-Step Process**
  1. Apply
  2. Select a Bed
- Selection begins in **October**
- Upperclass students **self-select** housing assignments

**DATES/DEADLINES/IN  
STRUCTIONS SENT  
VIA GVSU EMAIL!**





# **GVSU (@mail.gvsu.edu) e-mail account is main form of University communication**

- Housing Application & Room Selection
- Packages
- Changes in Policy/Protocol
- Check-in & Check-Out Procedures
- Programming & Events
- Facilities Updates
- Required Meetings

# Reminders

## Tours

- **North Campus:** includes traditional style, suite style, 1-BR apt style and 2-BR apt style; leaves from 20/20 Desk at 3:00pm, 3:15pm, 3:30pm
- **South Campus:** by request; leaves from 20/20 Desk at 3:30pm, includes South Apartments and Laker Village
- **Niemeyer:** 2BR and 4 BR units available; visit Honors College Office
- **Virtual Tours:** <https://www.youtube.com/watch?v=leA7TXlyhKk>



Follow us on Twitter & Facebook - @gvsuhousing



# Questions

What else is on your mind?  
Is there something we didn't  
cover?

**THANK YOU!**