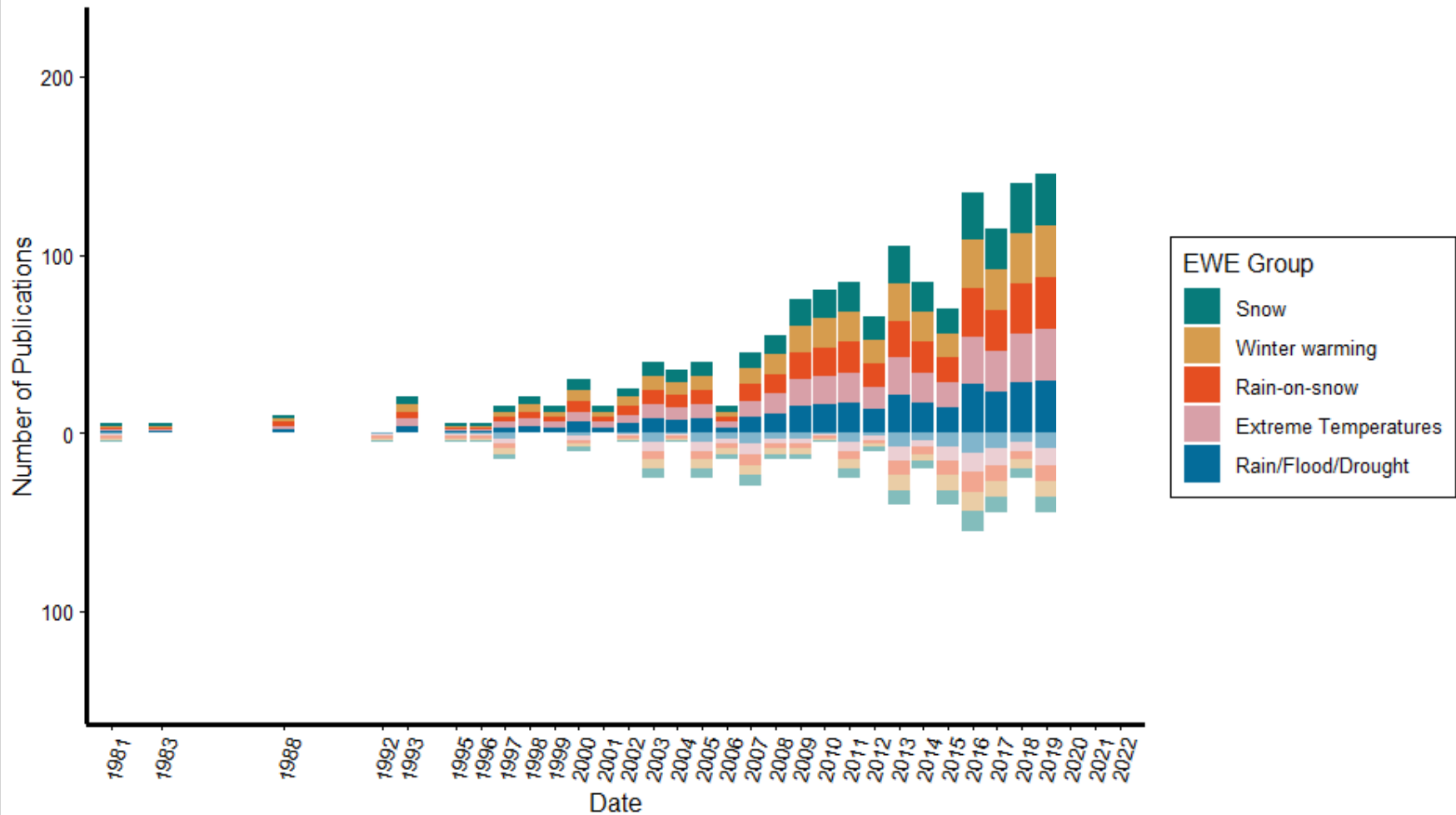


Occurrences and consequences of extreme weather events in the terrestrial Arctic

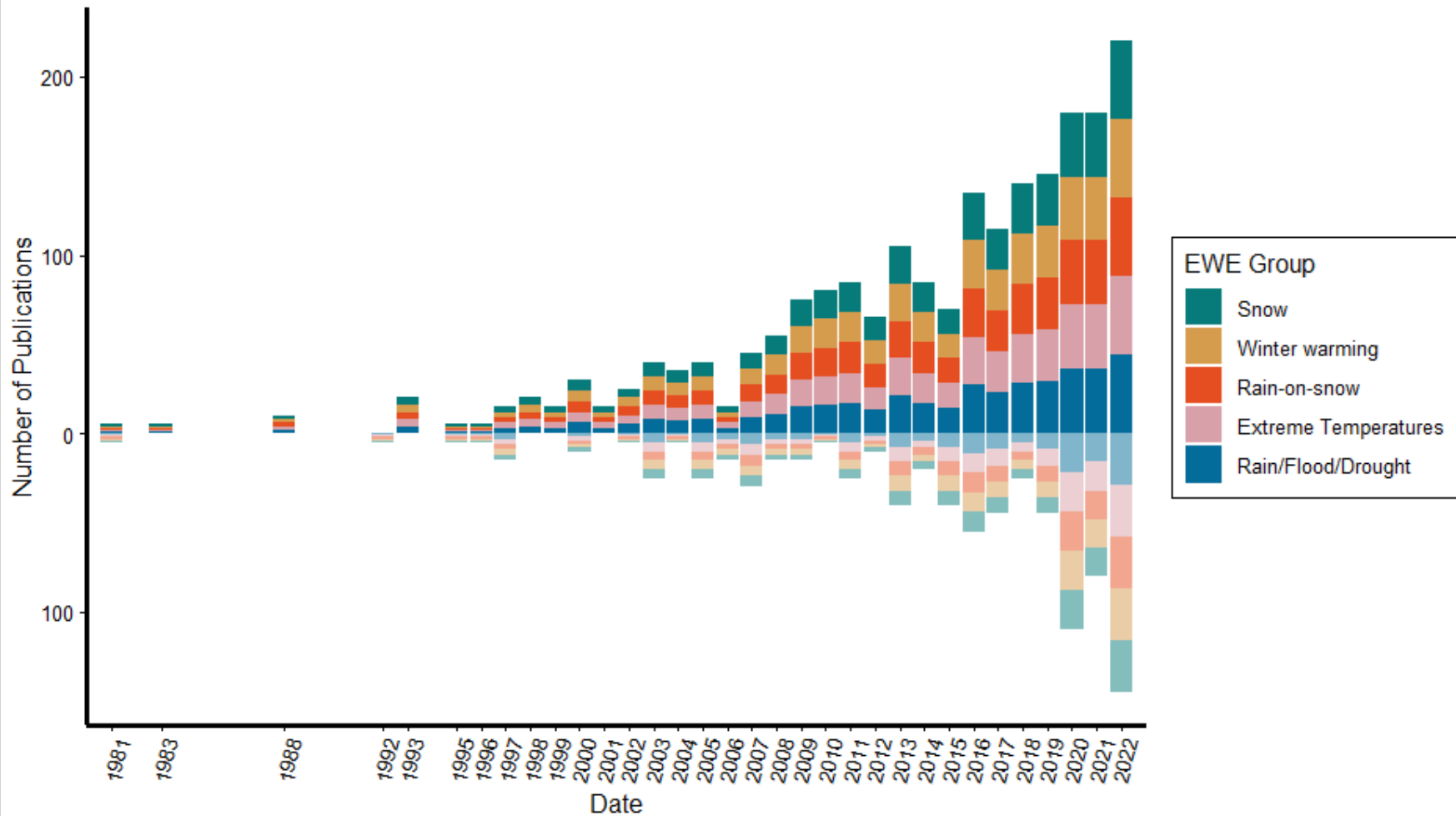
A systematic review

Abbey Serrone, Maja Sundqvist, Henni Yläne, Anne Bjorkman, Aurora Patchett, Didac Pascual Descarrega, Frans-Jan Parmentier, Geerte Fälthammar-de Jong, Heather Reese, Johan Ekroos, Johan Eckdahl, Katrín Björnsdóttir, Margareta Johansson, Paulina Wietrzyk-Pelka, Sirpa Rasmus, Stef Bokhorst, Tim Horstkotte, Maja Wadling, Malin Hannibal, Mats P. Björkman

Occurrences and Consequences Over Time



Occurrences and Consequences Over Time



Early snow melt

Late snow melt

Less snow cover

More snow cover

Rain-on-snow

Spring frost / snowstorm

Winter warming

Heat-wave

Extreme warm T

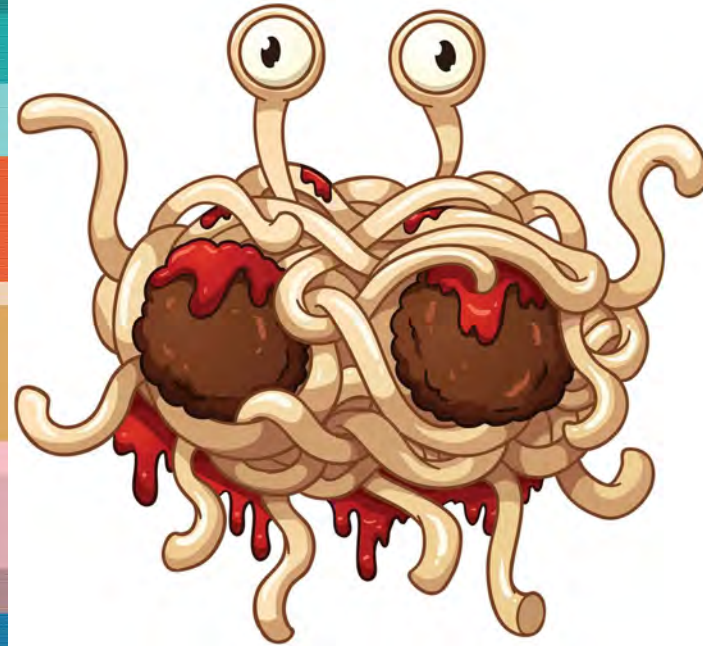
Extreme cold T

Heavy rainfall

Flooding

Drought

Heavy wind / storm



Livelihoods

Economics

Animals

Vegetation

Biodiversity

Micro-organisms

Soil

Carbon and nutrient cycles

Snow/ice

Energybalance/albedo