

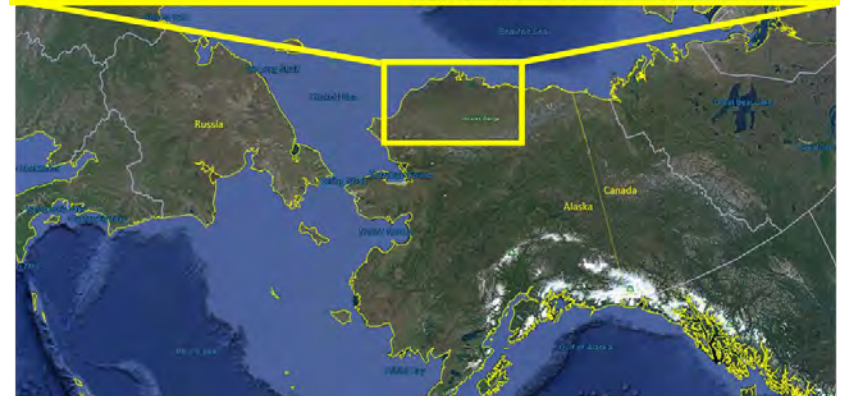
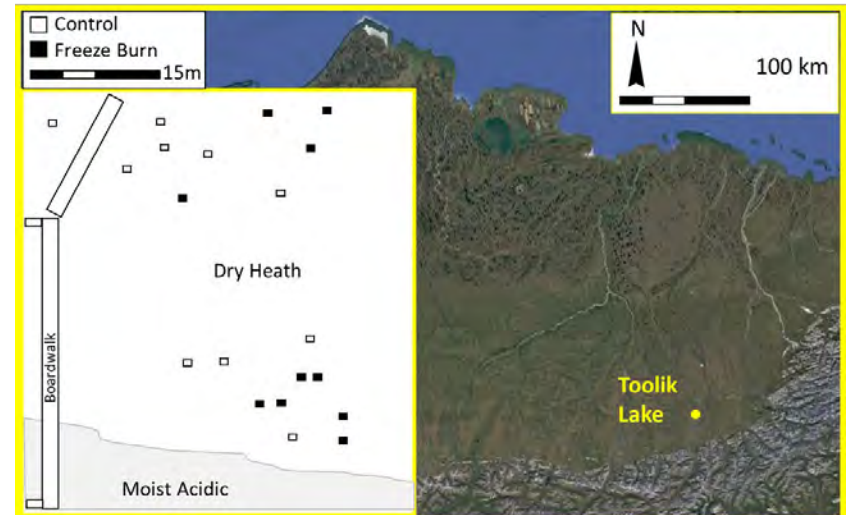
Effects of winter warming events on dry heath tundra vegetation mortality and community productivity near Toolik Lake, Alaska

Jeremy May^{1,2}, Steven Oberbauer², Katlyn Betway-May^{3,4}, Robert Hollister⁴,
Roxaneh Khorsand⁵, Steven Unger², Kyla Morris¹, and Caroline Brose⁵

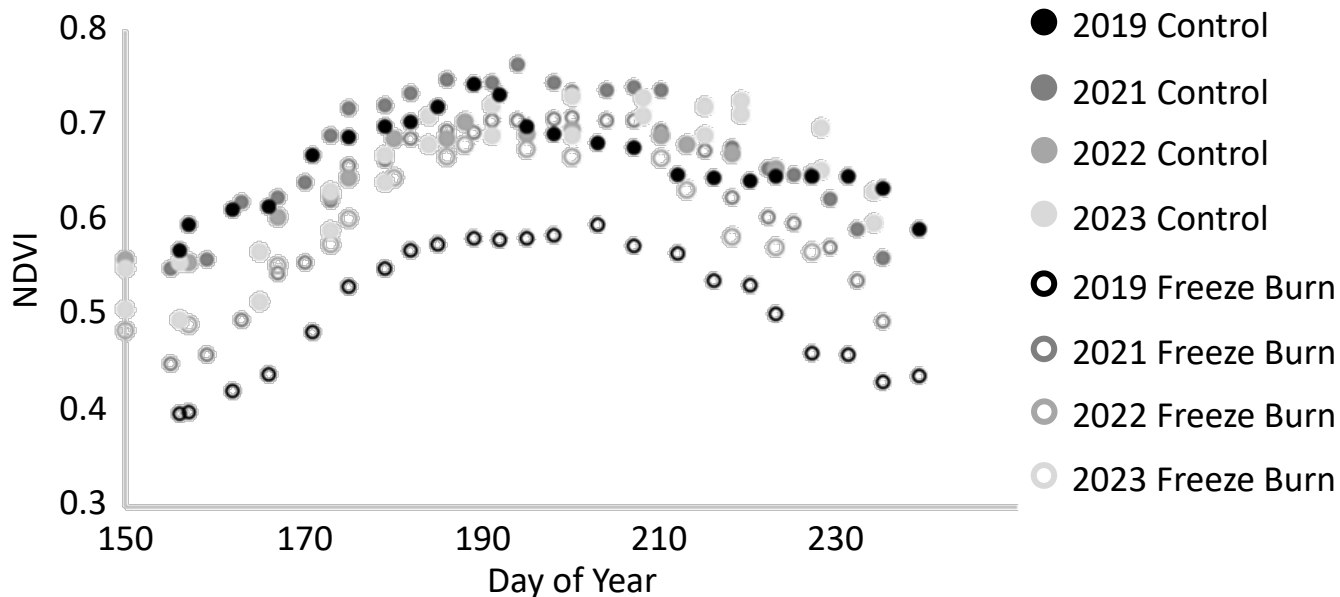
¹Marietta College, ²Florida International University, ³USDA Forest Service, ⁴Grand Valley State University, ⁵Colorado College



- We examined 20 plots (10 control and 10 experimental) in a dry heath community near Toolik Lake, Alaska for damage following a freeze burn event in February 2019.
- We measured community NDVI as well as stem mortality and leaf-level photosynthesis for four focal species.



Seasonal NDVI



Stem Mortality

