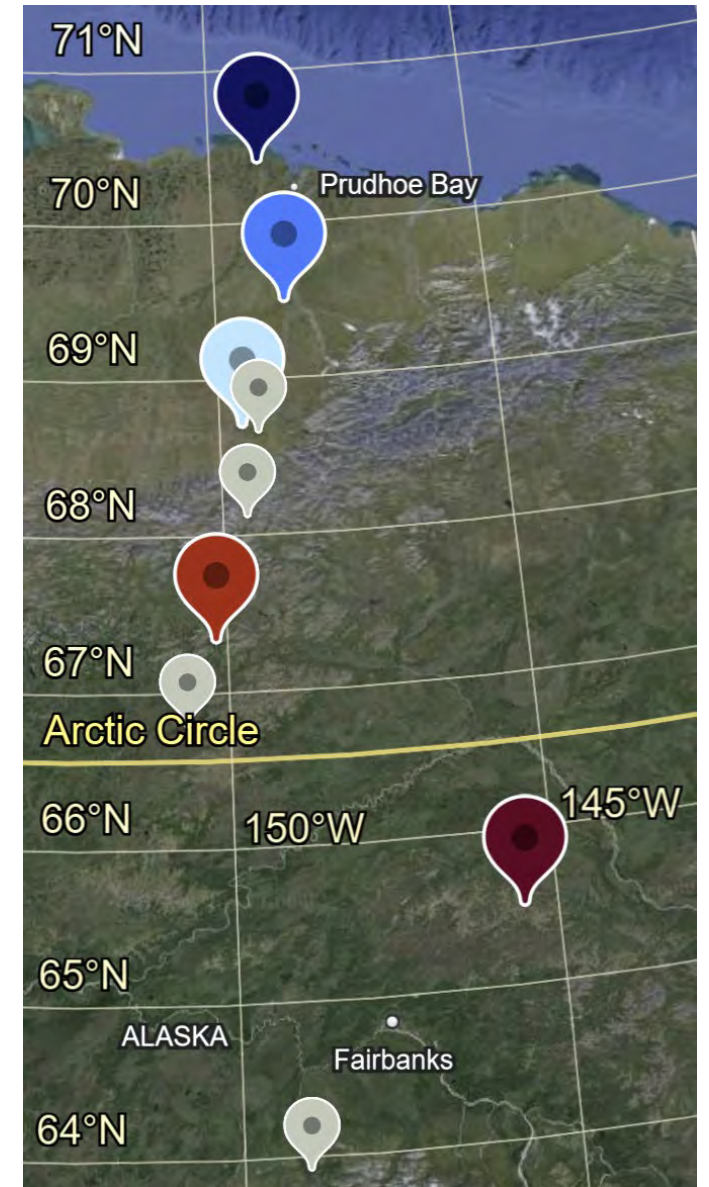
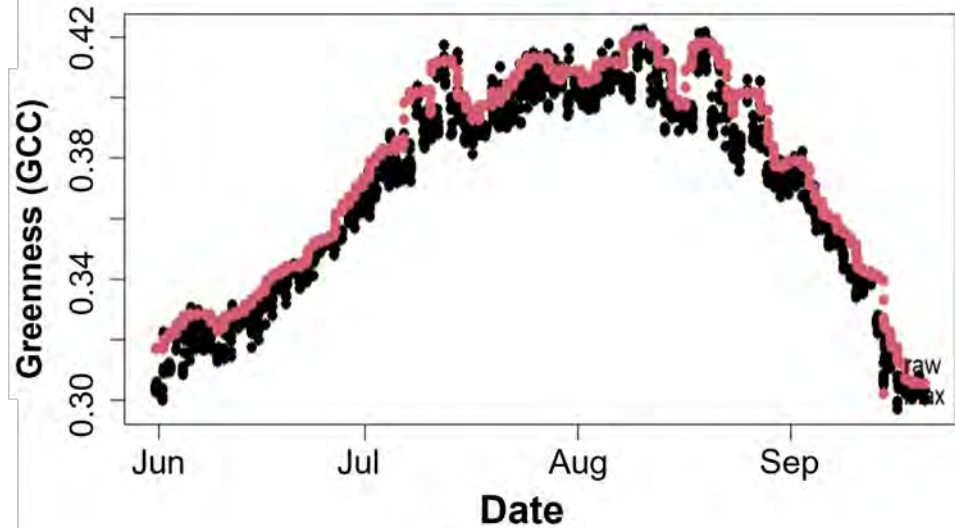


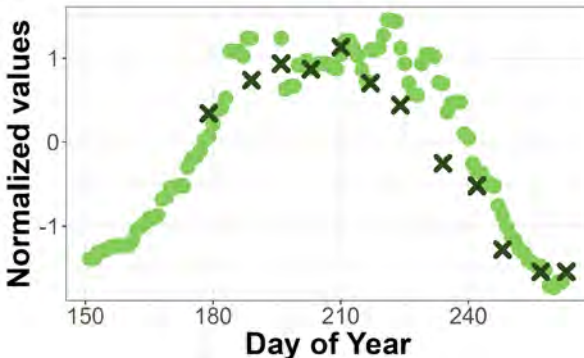
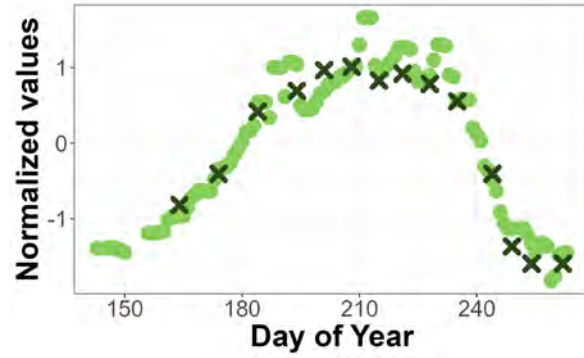
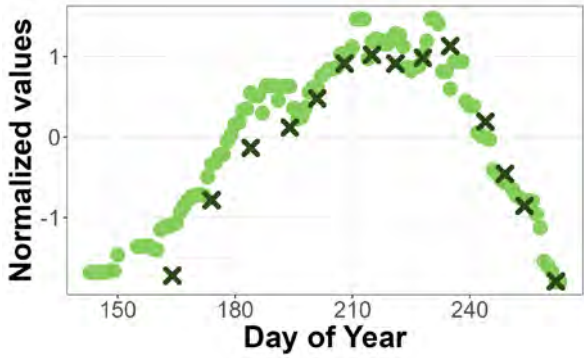
# Expanding the range of phenology measurements with low-cost phenocams

Bjorn Larson<sup>1</sup>, Marcel C. Vaz<sup>2</sup>, Ned Fetcher<sup>2</sup>, Michael L. Moody<sup>3</sup>, Gaius Shaver<sup>1</sup>

1. The Ecosystems Center, Marine Biological Laboratory, Woods Hole, MA. 2. Institute for Environmental Science and Sustainability, Wilkes-Barre, PA. 3. University of Texas at El Paso



# 1. Phenocam data correlate strongly with growth

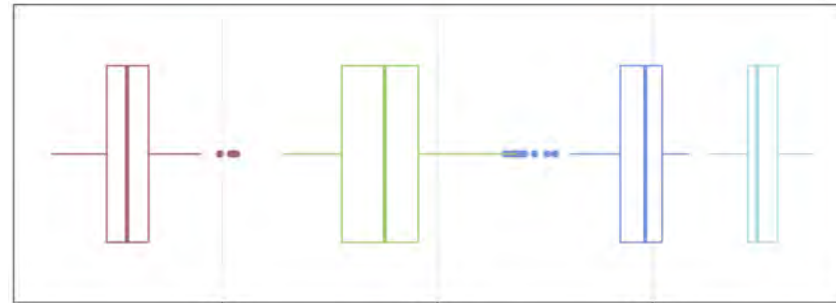


# 2. Clear variation in phenology with latitude

Northern



Southern



Day of Year

Breakpoints

- Start of season
- Stabilization
- Senescence
- End of season

# 3. Differences persist in transplanted tussocks

