

# Update: CLAS Vision, Commitments and Action Plan

---

CLAS Start-Up Meeting

August 25, 2022

View slide deck at:  
[gvsu.edu/s/24a](https://gvsu.edu/s/24a)



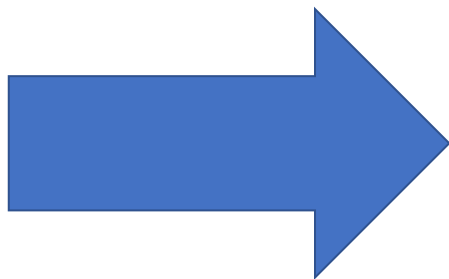
# Acknowledgements

Stand up / raise your hand (stay standing) if you participated in...

- Guiding Coalition/Faculty and Staff Team Members: Summer 2022
- Reviewing/Feedback on CLAS Visioning Plan
- Summer SIG 2021
- Data Analysis: May 2021
- Winter SIG: Winter 2021
- Jamboard Session Tech Support and Facilitation
- Winter 2021 Jamboard Sessions

View slide deck at:  
[gvsu.edu/s/24a](https://gvsu.edu/s/24a)

# Feedback = Ingredients for the CLAS Vision, Commitments and Action Plan



## Vision, Commitments and Action Plan

College of Liberal Arts and Sciences  
2021-2025

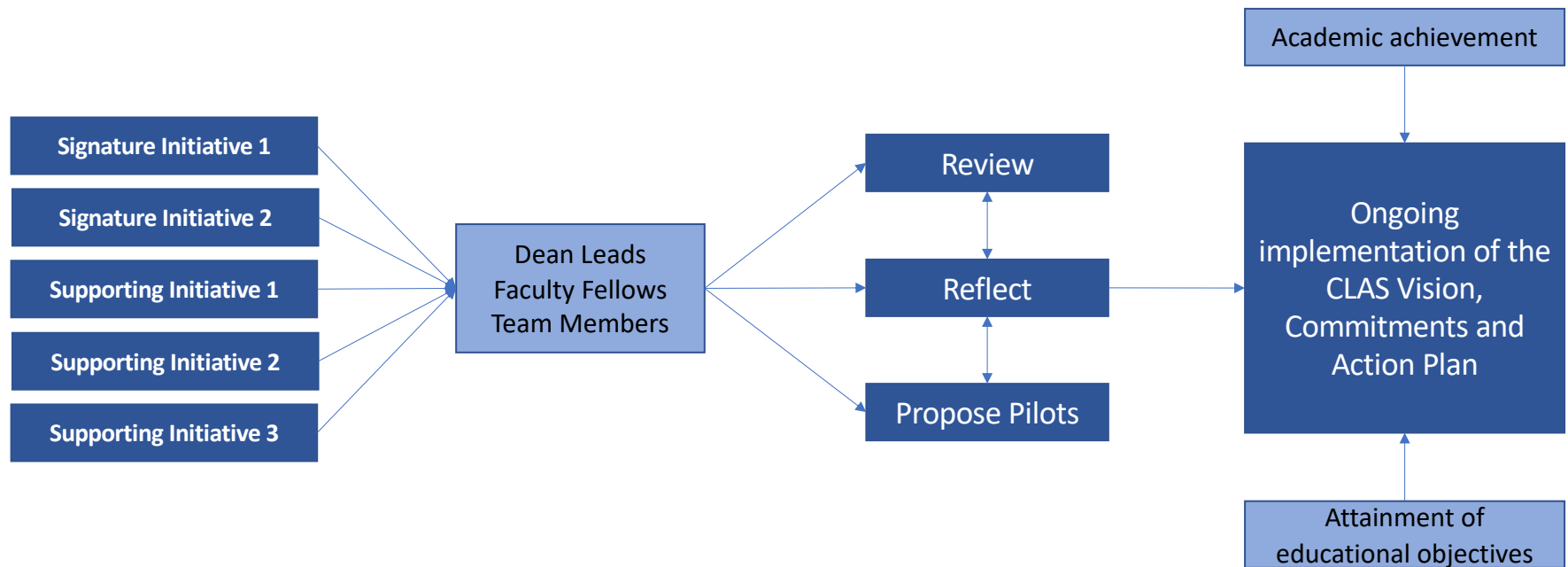


## CLAS Vision Statement and Commitments

**Through our commitment to liberal education, CLAS strives to be an inclusive and equitable community of inquiry where students, staff and faculty collaborate to pursue and create knowledge, to enact global citizenship, and to engage and support our many communities. (Jan. 2022)**

- *Commitment 1: Centering Diversity, Equity, Inclusion, and Access*
- *Commitment 2: Supporting Student Success*
- *Commitment 3: Creating a Workplace Where Faculty and Staff Can Thrive*
- *Commitment 4: Teaching and Learning Through Engagement*
- *Commitment 5: Engaging Our Alumni and Communities*

# This summer's work...





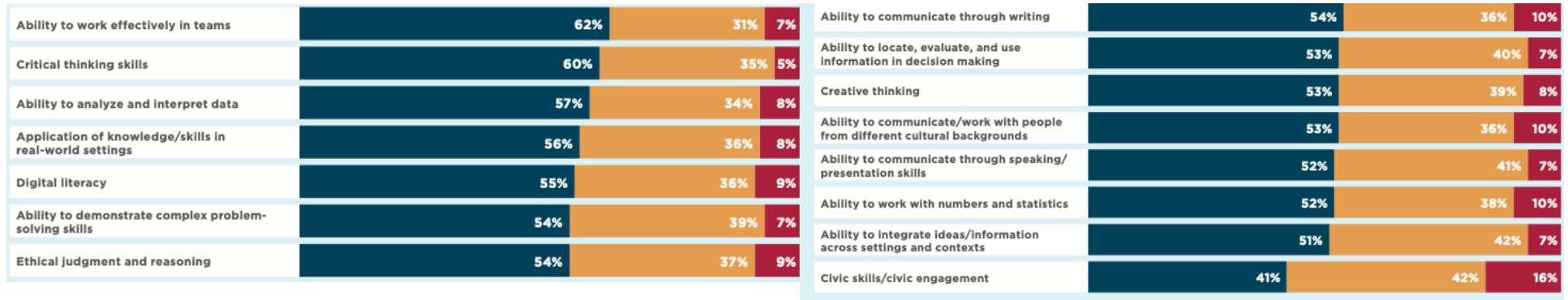
# ...responsive to our students' futures...

At least half of employers view the skills of a liberal education as “very important” for college graduates.

**Very  
important**

**Somewhat  
important**

**Not at all/  
Not very  
important**



[AAC&U, How Colleges Contribute to Workforce Success: Employer Views on What Matters Most \(Washington, DC: AAC&U, 2021\)](#)



...popular with  
alumni...

---

Dane McAllister, 2022

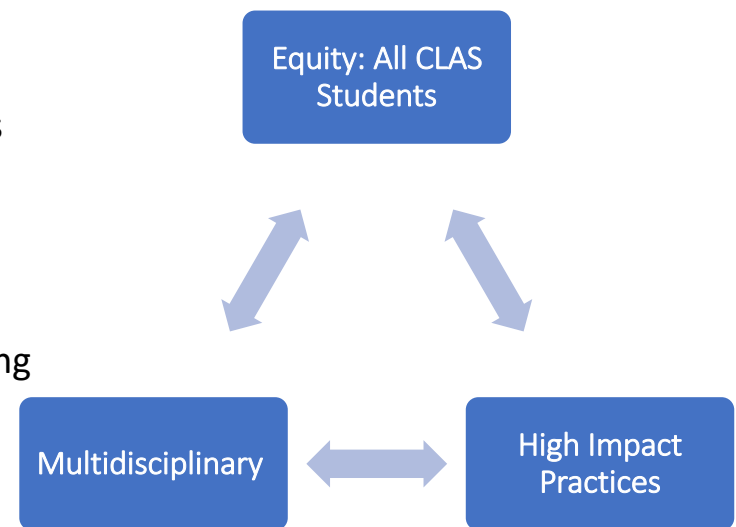


But currently not equitably  
accessible to all students

...and leads to enhancing the CLAS experience...

In order to...

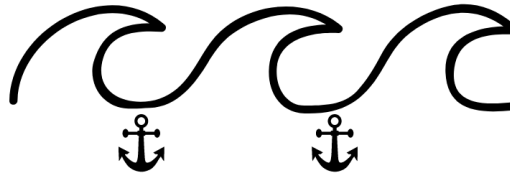
- Create a mechanism through which we achieve the CLAS vision
- Provide an across-the-college experience that engages **all students in all programs** in multiple high-impact practices through educational experiences that center equity and inclusion and lead to a lifetime of learning
- Focus on early exposure to the intersection of liberal arts and sciences and career development
- Contextualize learning within vocation and careers, building on the strength of a multidisciplinary approach
- Create a relationship-rich environment for students, faculty, and staff



# Launching the CLAS Voyage



**Embarking  
Experience**



**Reflective Portfolio  
Experience**



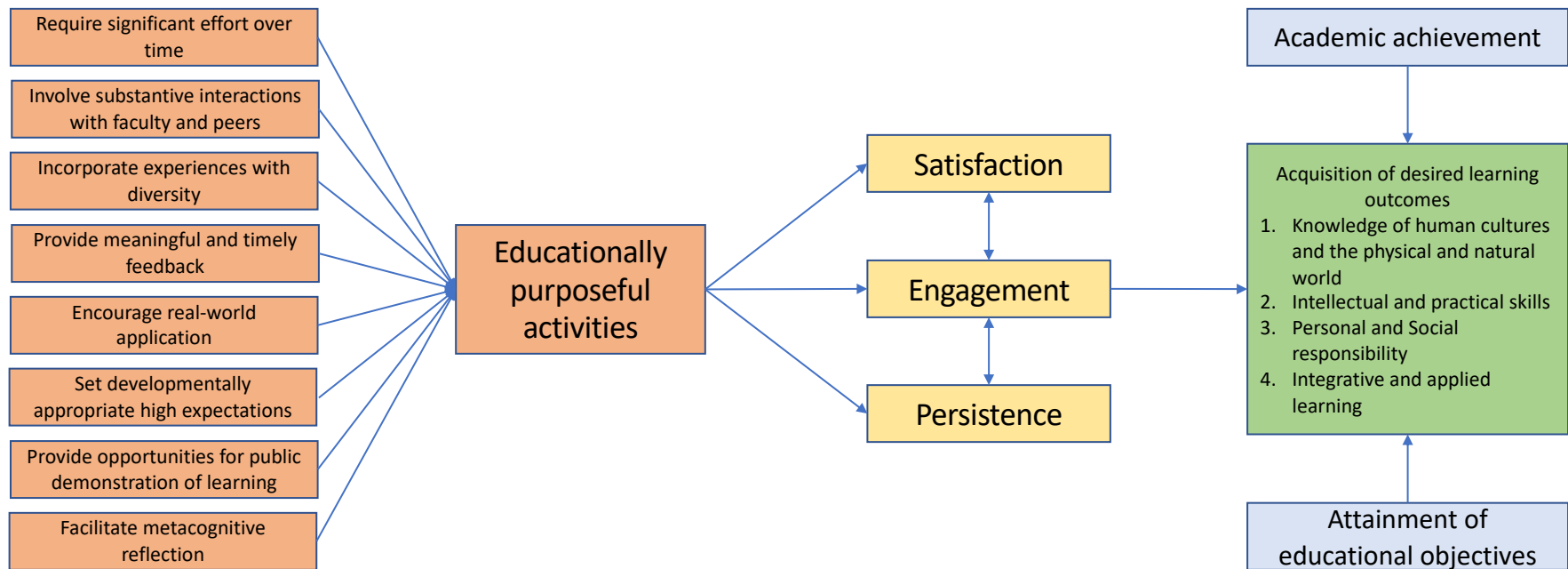
**Capstone**

+

**At least two HIPs embedded in each program:**

- **Internship/Co-Op/Practicum**
- **Study Abroad/Away or Global Learning**
- **Linked Courses/Learning Communities**
- **CURE/CBR/Creative Expression/Mentored Research**
- **Community-Based Learning/Service Learning**

# The Voyage is evidence-based...





...supports scholarship and faculty/staff needs...

## The Voyage...

- Supports our scholarly and creative work
- Brings additional visibility and support to undergraduate research
- Will build acknowledgement and support for community-engaged scholarship
- Supports our goal of building relationships and collaborations across the College and in our communities.

...and is central to CLAS, but that's not the whole story.

## CLAS Voyage

### Enhancing Student Success Through Academic Support

First-year linked courses, DFW rate reduction support, tutoring, advising

### Supporting Faculty and Staff Success

Better workload awareness, enhanced PD, trauma-informed leadership, external support for scholarship

### Supporting Graduate Programs

Opportunities for graduate student support of HIPs, improve alumni engagement

Big Visions Need Support



## The CLAS Center for Experiential Education and Community Engagement

Over the next three years, the Center will...

- Provide the infrastructure to kickstart, coordinate, and support the work of constructing the CLAS Voyage
- Prioritize collaboration across the institution from the start, as the director will be charged with convening conversations and developing partnerships with all related offices and initiatives
- Identify and address inequities in student access to HIPs
- Addressing Faculty workload in delivering HIPs





## The CLAS Center for Experiential Education and Community Engagement

In the long term, the Center will...

- Coordinate the CLAS Voyage
- Serve as a single point of contact for CLAS's community and alumni engagement efforts, including coordination of community-based learning, internships/co-ops and practica, and alumni mentoring programs
- Support CLAS faculty and staff engaged in HIPs
  - By connecting projects with partners and resources
  - By engaging in grant-seeking and fundraising in collaboration with the Dean.

# This Work is Long Term and Collaborative

## Year 1 (Fall '22-Summer '23)

Launch the CLAS Center

Define HIPs Matrices

Develop E-Portfolio model

Develop multidisciplinary linked courses

Address barriers for faculty/staff

Grants to units for curriculum realignment

## Year 2 (Fall '23-Summer '24)

Launch pilot multidisciplinary linked courses

Solidify financial model and structure for Center

Continue to build internal and external partners

Grants to units for curriculum realignment

## Year 3 (Fall '24-Summer '25)

Launch second round of pilot multidisciplinary linked courses

Grants to units for final curriculum realignment

Launch for ALL incoming students, Fall 2025

# This Work is Long Term and Collaborative

## Year 1 (Fall '22 – Summer '23)

- Launch the CLAS Center for Experiential Education and Community Engagement
- Define HIPs and create Quality Matrices
- Identify baseline of HIPs offerings
- Develop multidisciplinary linked courses and embarking experiences
- Faculty ambassadors: Explore through FLC and existing HIPs faculty
- Identify and address barriers for faculty/staff (personnel and other)
- Align efforts with key campus partners (CSCE, PIC, Career Center, Alumni Relations)
- Identify skills for ePortfolio
- Center student (current and alumni) voices
- Summer '23: Grants to units for curriculum realignment

## Year 2 (Fall '23 – Summer '24)

- Launch pilot courses redesigns
- Solidify financial model and structure for Center
- Identify SLOs and Assessment Plan
- Continue to build internal and external partners
- Support increased offerings for all students
- Summer '24: Grants to units for curriculum realignment

## Year 3 (Fall '24 – Summer '25)

- Launch second round pilot course redesigns
- Summer '25: Grants to units for final curriculum realignment
- **Launch for ALL incoming students, Fall 2025**



## Questions

- Conversations over lunch
- Submit Questions to [tinyurl.com/CLASVoyage](https://tinyurl.com/CLASVoyage)
- View answers to FAQs and slide deck at the CLAS website at [gvsu.edu/clas/voyage](https://gvsu.edu/clas/voyage)
- Open office hours:
  - Monday, September 12 2-3PM, MAK B-4-243
  - Thursday, September 15 11A-12P, virtual



*Questions link and QR code available in the lobby and at lunch on the tables*