

Children and Neurodevelopmental, Behavioral, and Developmental Disorders: Early Identification and Care Planning

Curriculum: Educational opportunities: Understanding the autism spectrum and neurodiversity

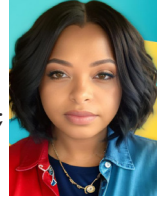
Date/time: **Friday, October 4, 2024** • Program 8:45 AM – 12:00 PM (ET)

Location: **Live synchronous training via Zoom**

Social Work CECHs: 3 hours • Approved #MICEC-0004

Cost: Free to all MDHHS and private agency child welfare workers using code DHHS2024; \$59 all others

Presenter: **Brandi Berry-Lovelady, LLMSW**



Beginning skill level

Target audience:

- ✓ Family Preservation Workers
- ✓ Children's Protective Services Workers
- ✓ Foster Care Workers
- ✓ Adoption Workers

Training objectives: As a result of this training, participants will be prepared to:

- Identify criteria and characteristics of neurodevelopmental and related disabilities.
- Understand the roles of family, school, and community in the life of a person with neurodevelopmental and related disabilities.
- Consider the resources and interventions that exist throughout the lifespan—early intervention through adulthood.

Description: This training will help identify what specifically constitutes a neurodevelopmental and related disorder. The training will include information on the development of a care plan as well as identification of available supports and services for families to support the individual living with a neurodevelopmental and related disability throughout the lifespan. The training will include information on the development of medical/community support systems as well as the need for individualized care planning as the individual transitions to adulthood. This training will utilize exercises, small and large group discussion, and visual displays.

Suicide Prevention, Risk Assessment, and Intervention

Curriculum: Mental and behavioral health: Suicide prevention, and how to coach foster parents on prevention strategies

Date/time: **Friday, November 8, 2024** • Program 8:45 AM – 12:00 PM (ET)

Location: **Live synchronous training via Zoom**

Social Work CECHs: 3 hours • Approved #MICEC-0004

Cost: Free to all MDHHS and private agency child welfare workers using code DHHS2024; \$59 all others

Presenter: **Melissa Rosado, LMSW**



Beginning skill level

Target audience:

- ✓ Family Preservation Workers
- ✓ Children's Protective Services Workers
- ✓ Foster Care Workers
- ✓ Adoption Workers

Training objectives: As a result of this training, participants will be prepared to:

- Recall at least three risk factors, warning signs, and protective factors.
- Identify evidence-based/supported tools and measures used to identify suicidality and when to refer to other services.
- Summarize culturally responsive considerations to mitigate risk.

Description: The goal of this training is to provide professionals in health and human services settings an overview related to trends, prevalence, and preventability of suicidality and introduce evidence-based/supported tools to appropriately determine risk factors, protective factors, and refer for further screening if applicable. In addition, the training will explore the need for cultural humility and responsiveness when working with marginalized individuals to reduce barriers and access to treatment. This training will utilize small and large group discussion and visual displays.

How to register: Visit www.gvsu.edu/swce. Use code DHHS2024 upon checkout.

Contact: Lauren Fodor

Phone: 616-331-7180

Email: learn@gvsu.edu