

Artifact Packet

Video Link - <https://vimeo.com/43676172>

Figure 1 Hopewell Mounds from the Norton Mounds site in Grand Rapids



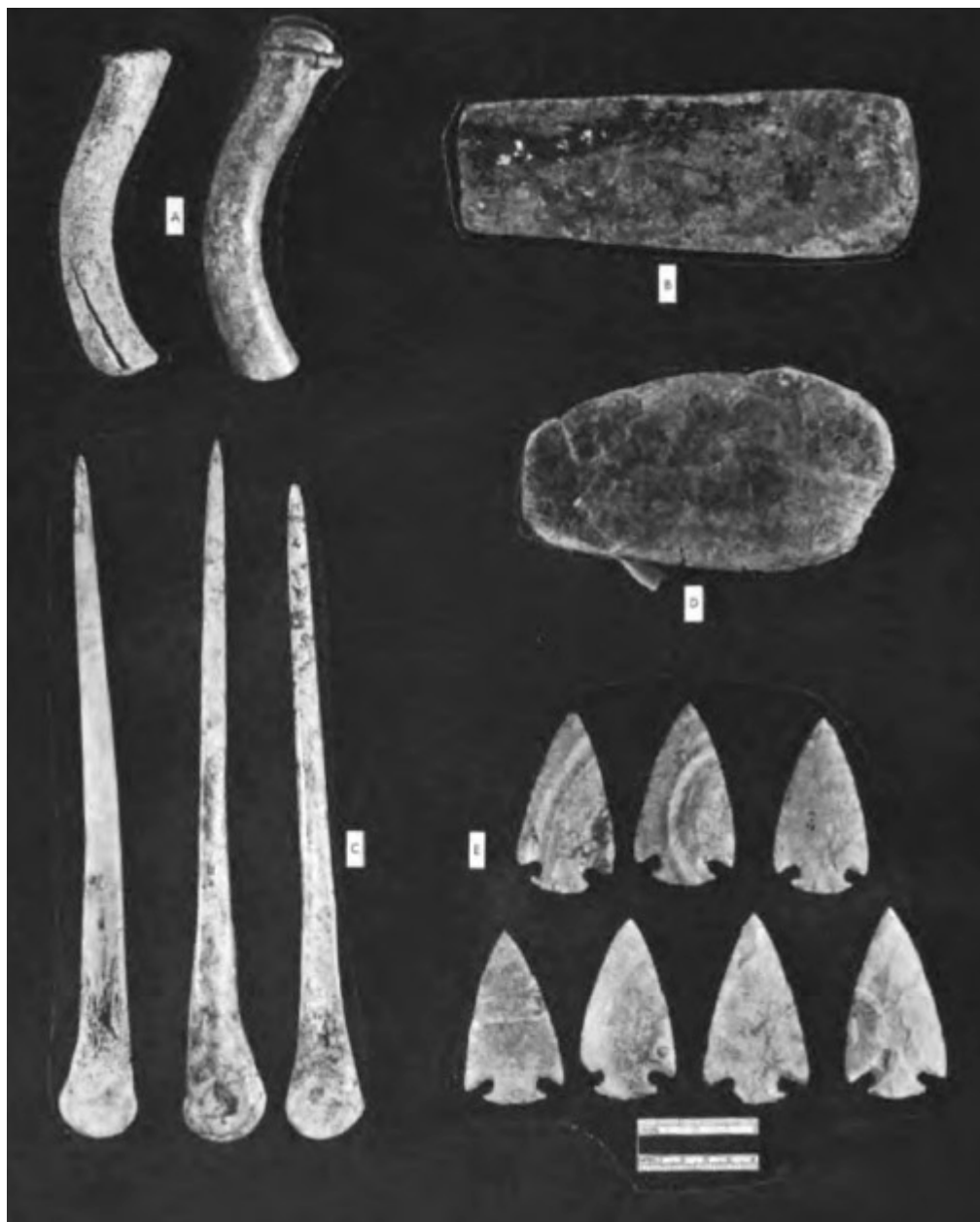
Images: Wikimedia Commons

Figure 2 Shells from Hopewell Mounds (Norton Mounds Site)



Robert Smith (February 1966), "Excavating the Hopewell Burial Mounds at Grand Rapids," in *Research News*[1], volume 16. Images: Wikimedia commons

Figure 3 Tools from Hopewell Mounds (Norton Mounds Site)



Robert Smith (February 1966), "Excavating the Hopewell Burial Mounds at Grand Rapids," in *Research News* [1], volume 16. Images: Wikimedia Commons.

Figure 4 Pottery and Ornaments from Hopewell Mounds (Norton Mounds Site)



Robert Smith (February 1966),
“Excavating the Hopewell Burial Mounds
at Grand Rapids”, in *Research News*[1],
volume 16. Images: Wikimedia Commons.

Figure 5 Historic locations of Hopewell Mounds in Grand Rapids.

Map courtesy of Grand Rapids History and Special Collections, Grand Rapids Public Library

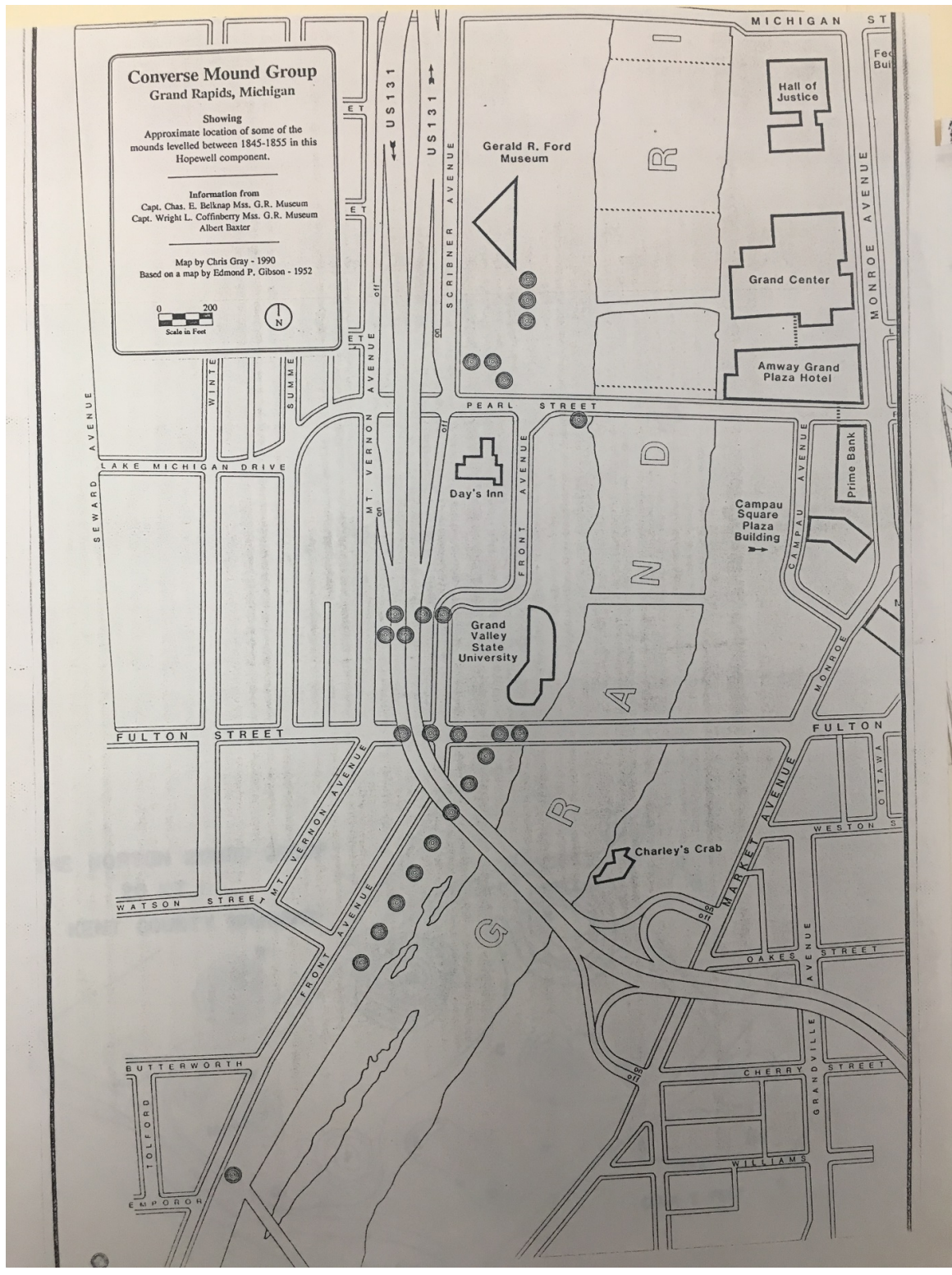
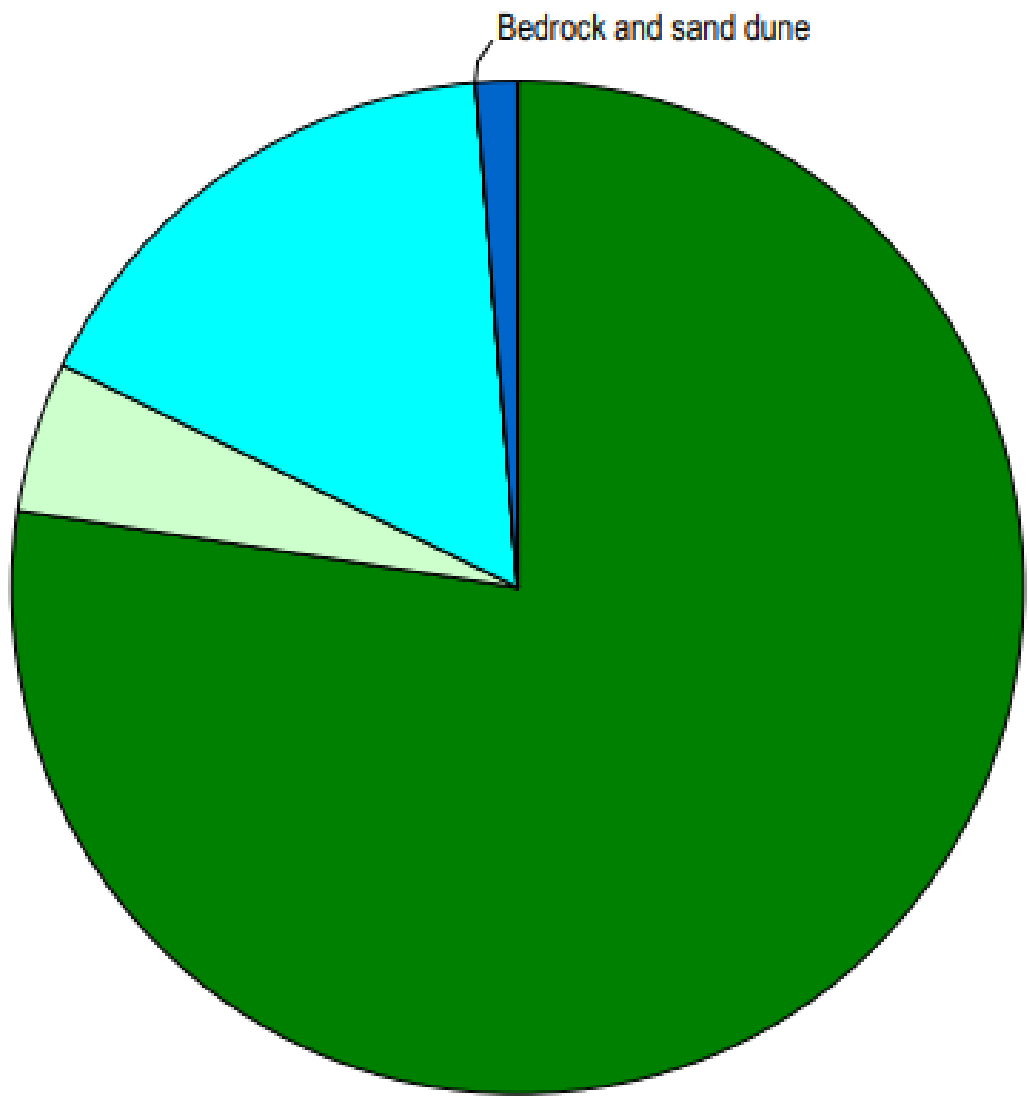
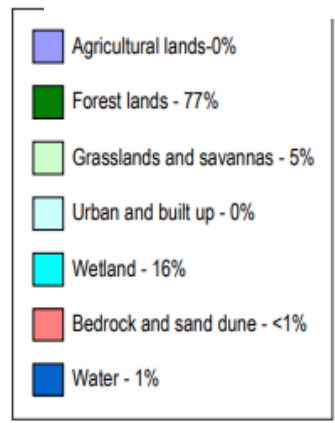
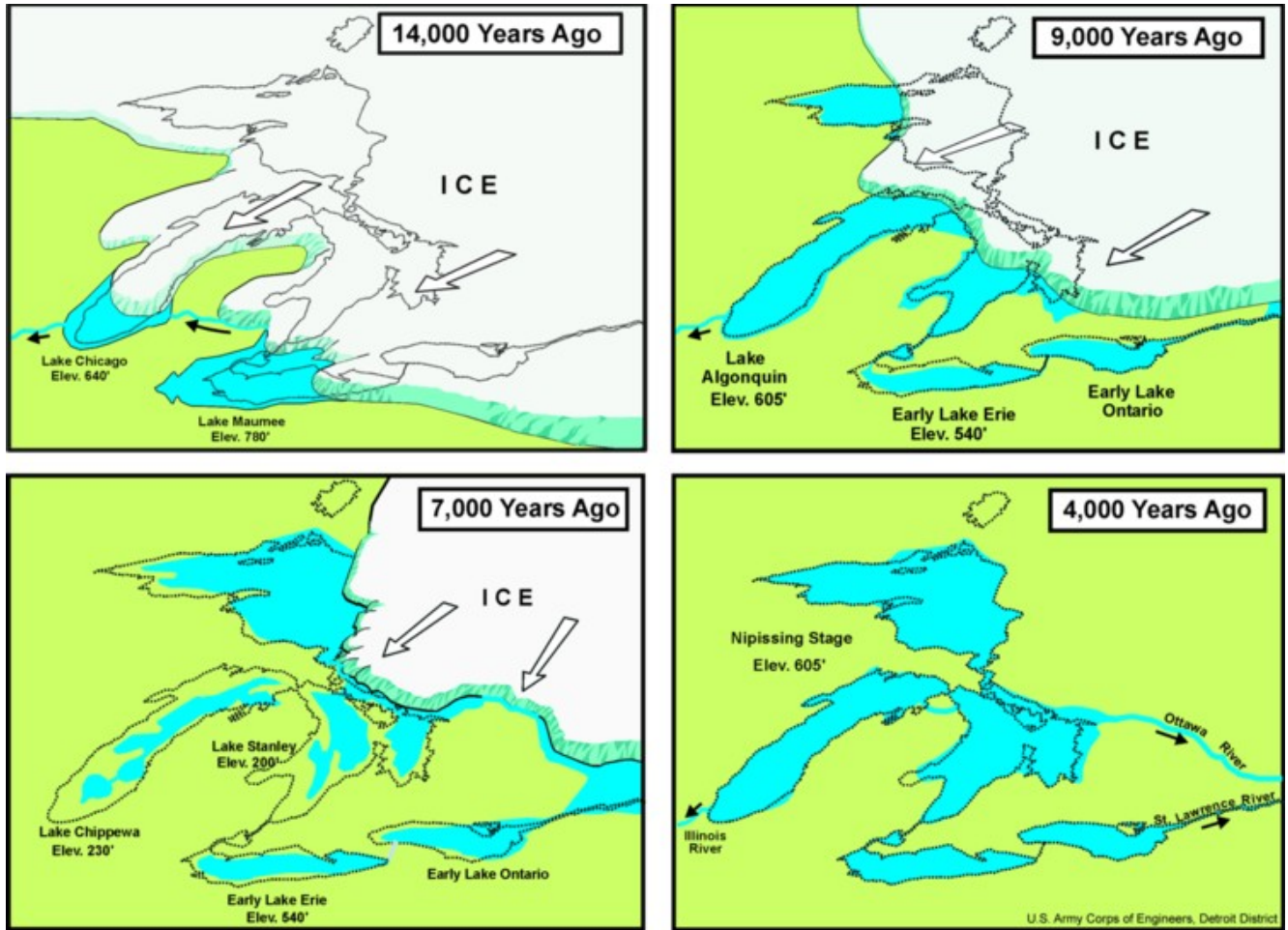


Figure 6 Pre-settlement vegetation in Grand Rapids



Hanshue, S. K.,
and A. H.
Harrington.
2017. Grand
River
assessment.
Michigan
Department of
Natural
Resources,
Fisheries Report
20, Lansing.

Figure 7 Ice sheet movement



US Army Corps of Engineers