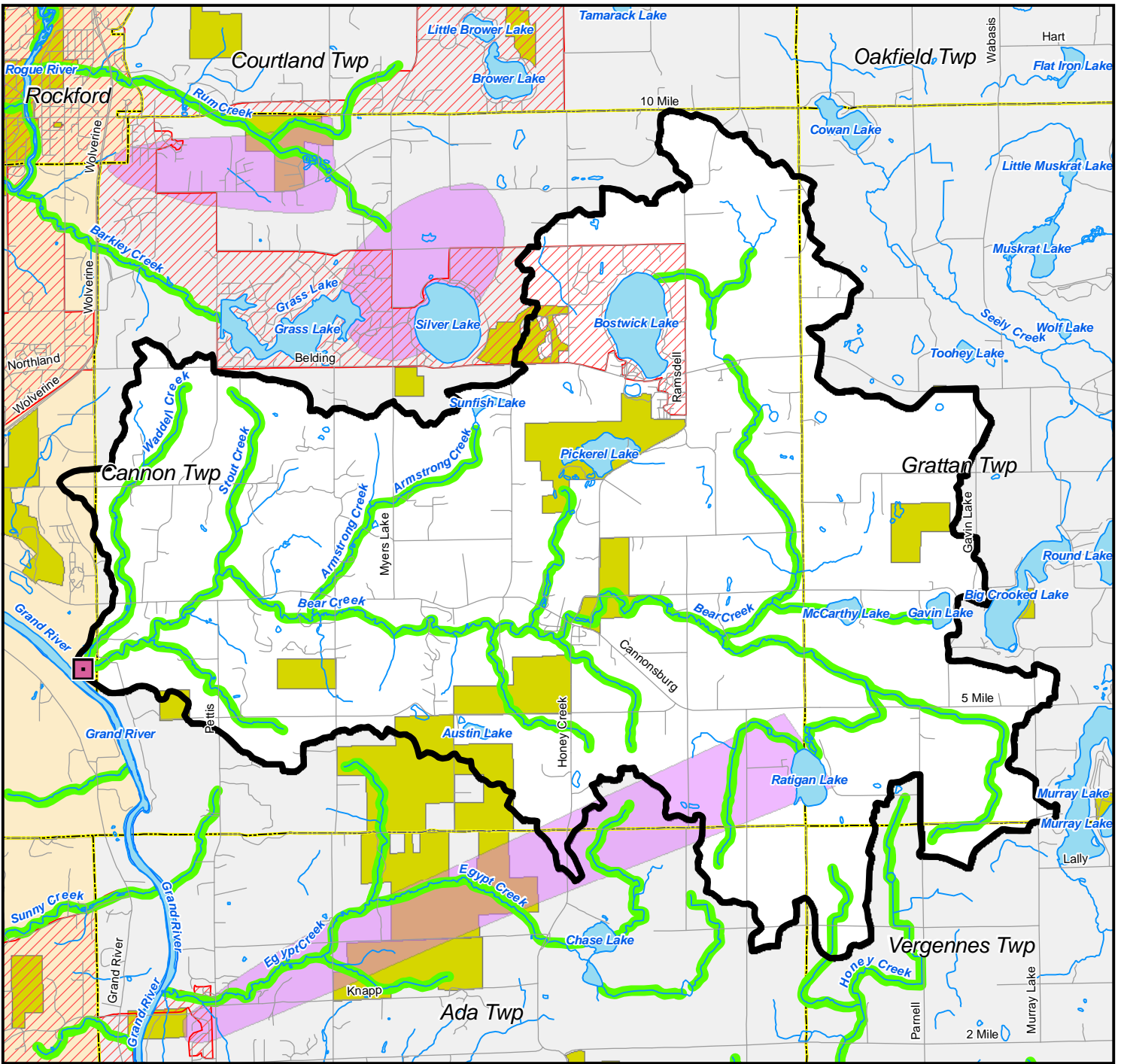


Appendix A.

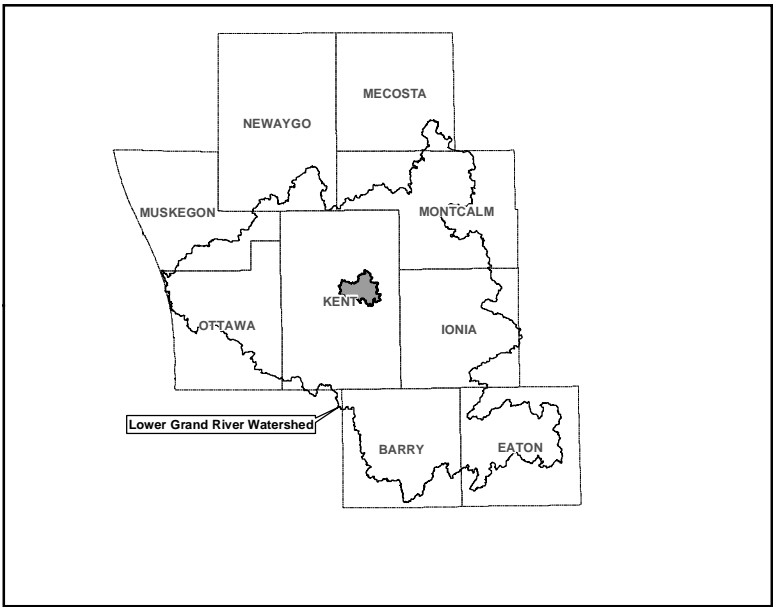
Lower Grand River Watershed Maps

Source: Lower Grand River Watershed Management Plan, Appendix 4-1





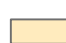

Visit the Lower Grand River Organizations of Watersheds
website at <https://www.lgrow.org/lgrwmp> for more information.



PLOT INFO: U:\CADD\080017GIS\MAP_DOCUMENTS\SUBWATERSHED\MGMT UNIT SUMMARY SHEET.MXD DATE: 06/14/2010 USER: MCL

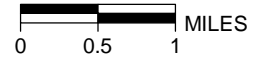


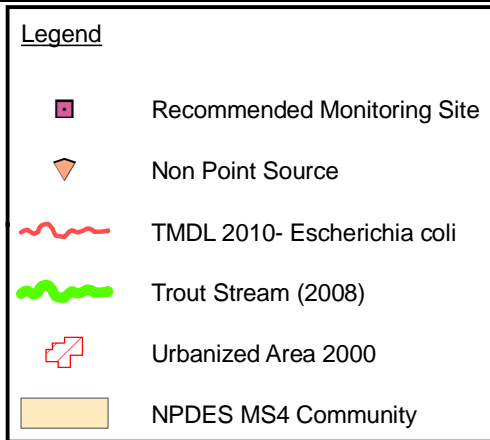
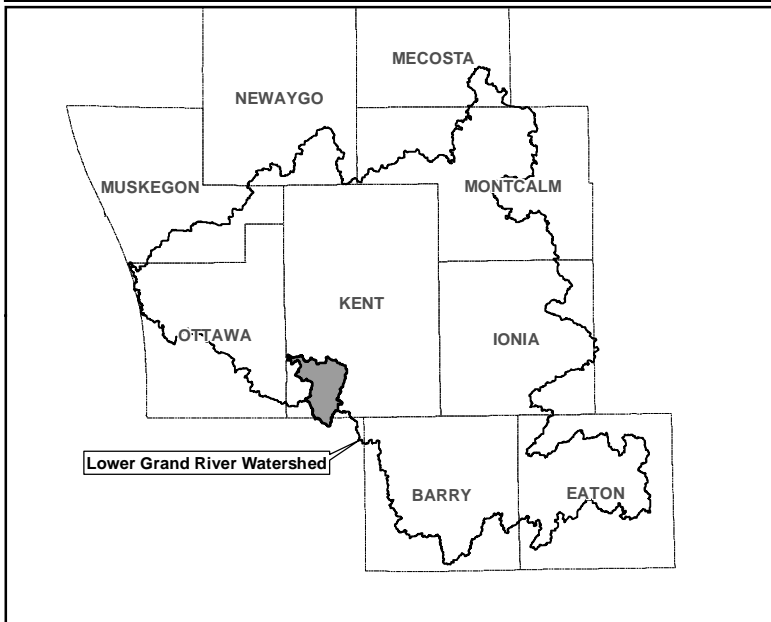
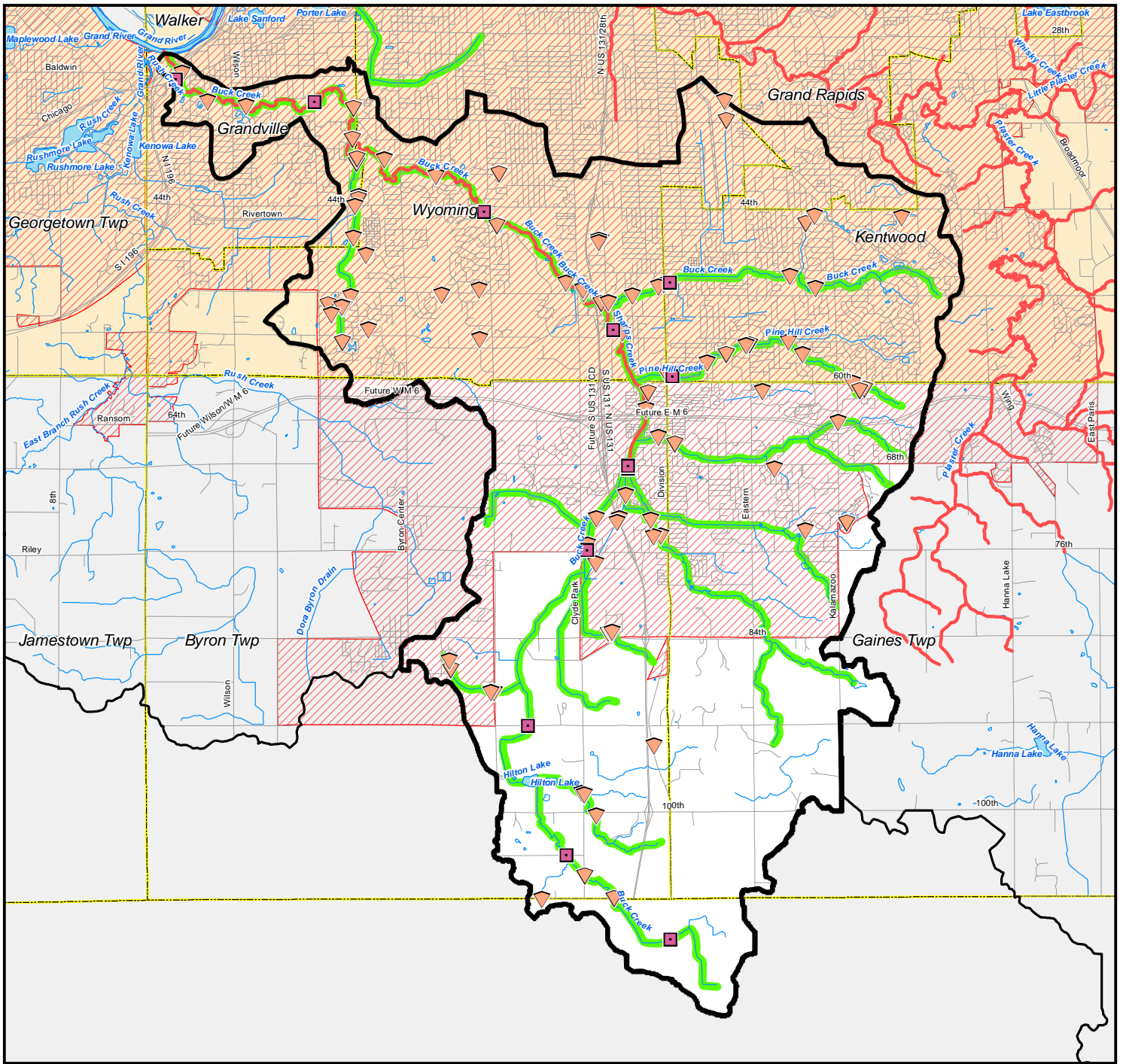
Legend

-  Recommended Monitoring Site
-  Trout Stream (2008)
-  Urbanized Area 2000
-  Wellhead Protection Area
-  Government and Protected Lands
-  NPDES MS4 Community



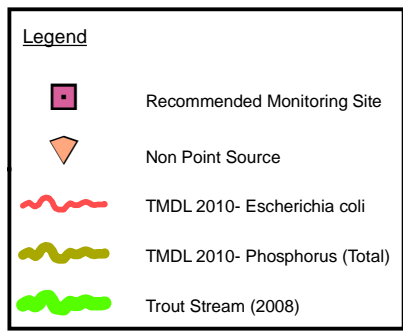
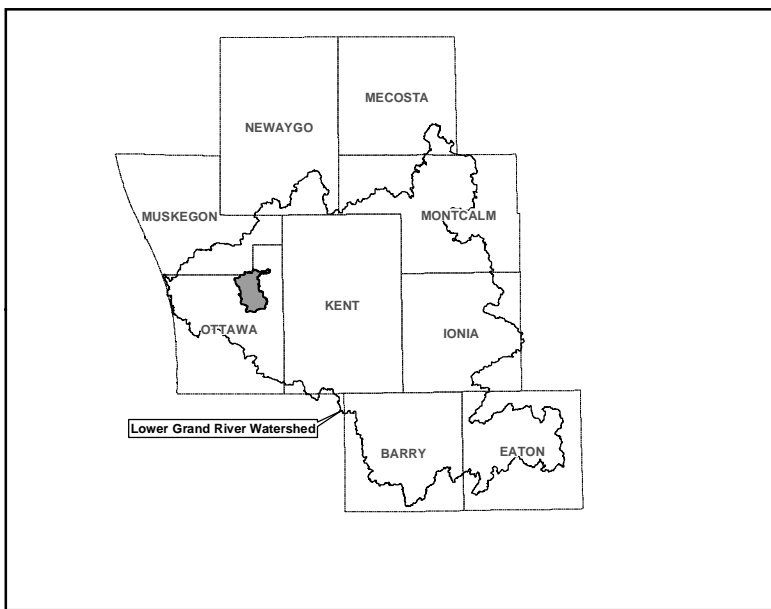
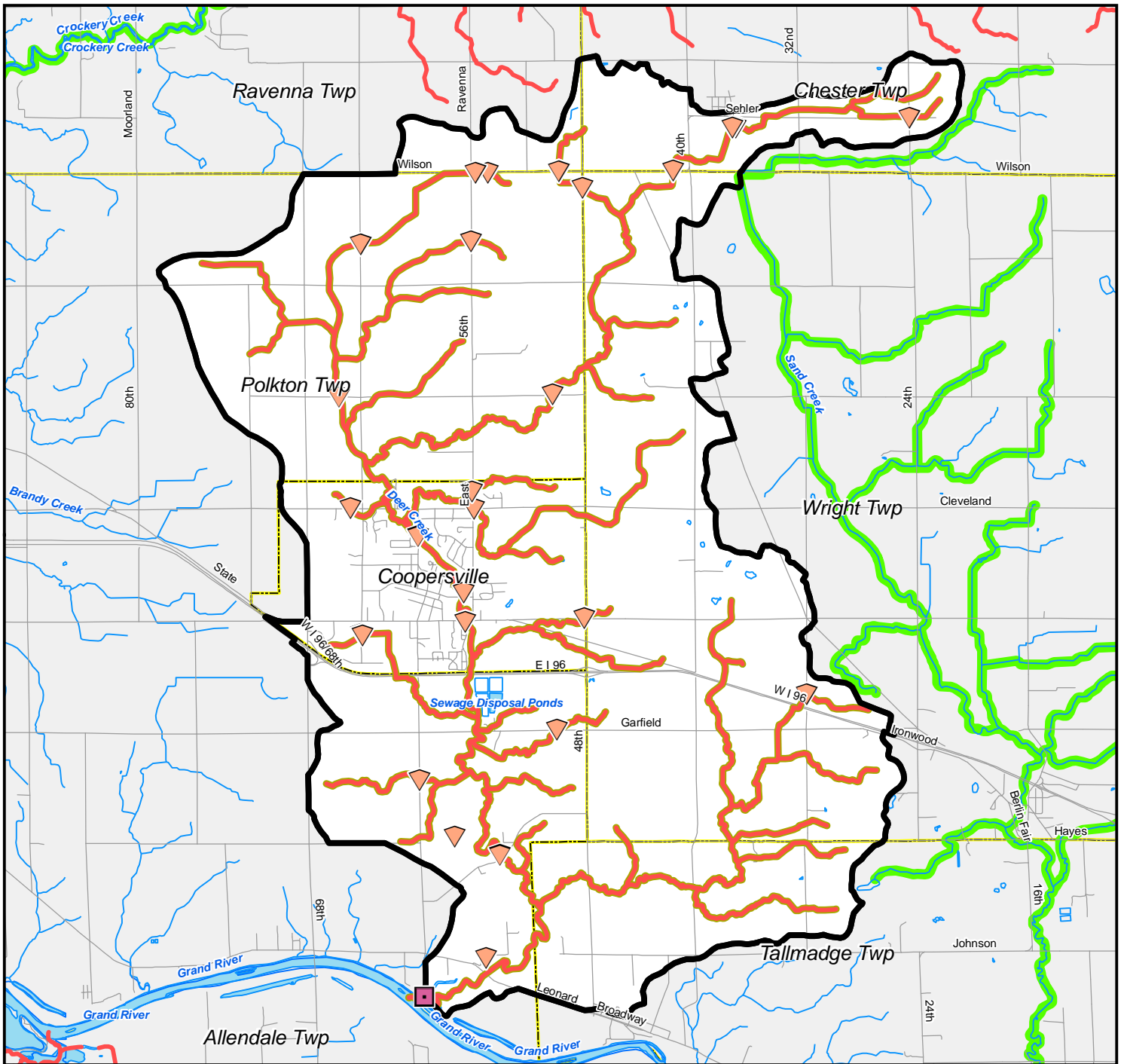
Bear Creek Subwatershed



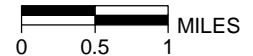


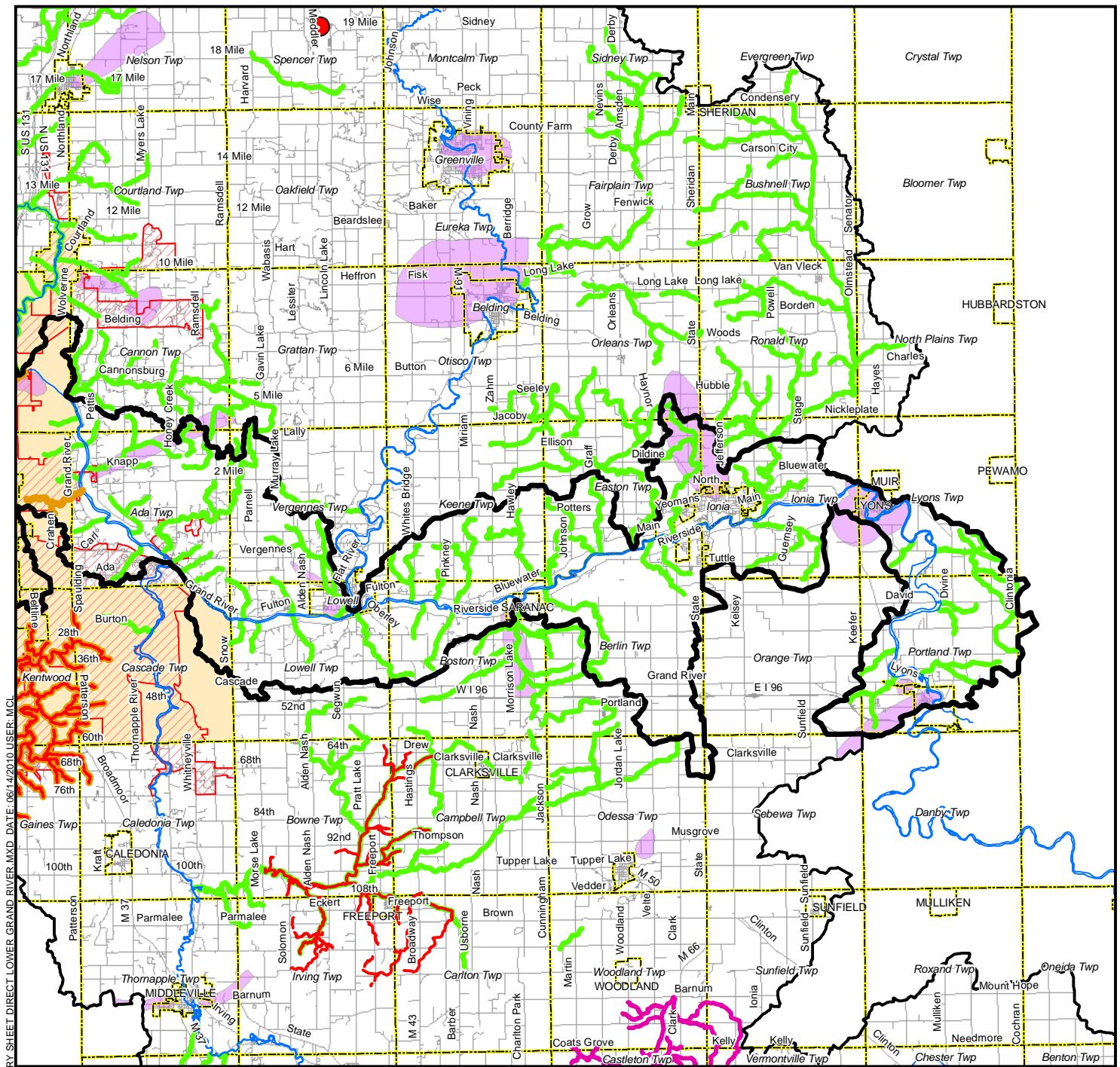
Buck Creek Subwatershed



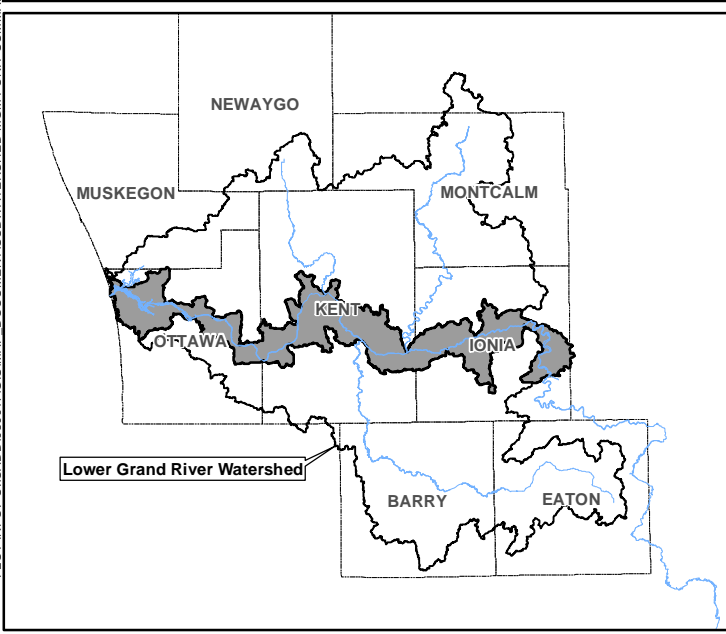


Deer Creek Subwatershed





PLOT INFO: U:\CADD\080017GIS\MAP_DOCUMENTS\SUBWATERSHED.MGMT\UNIT SUMMARY SHEET DIRECT LOWER GRAND RIVER.MXD DATE: 06/14/2010 USER: MCL



Legend

	TMDL Escherichia coli		Trout Stream (2008)
	TMDL 2010- Escherichia coli		Urbanized Area 2000
	TMDL 2010- Alt. in Wetland Habitat		Wellhead Protection Area
	TMDL 2010- Other Flow Regime Alt.		NPDES Phase II Community
	TMDL 2010- Other Anthro. Substrate		
	TMDL 2010- Sedimentation/Siltation		

Direct Drainage East to Lower Grand River Subwatershed

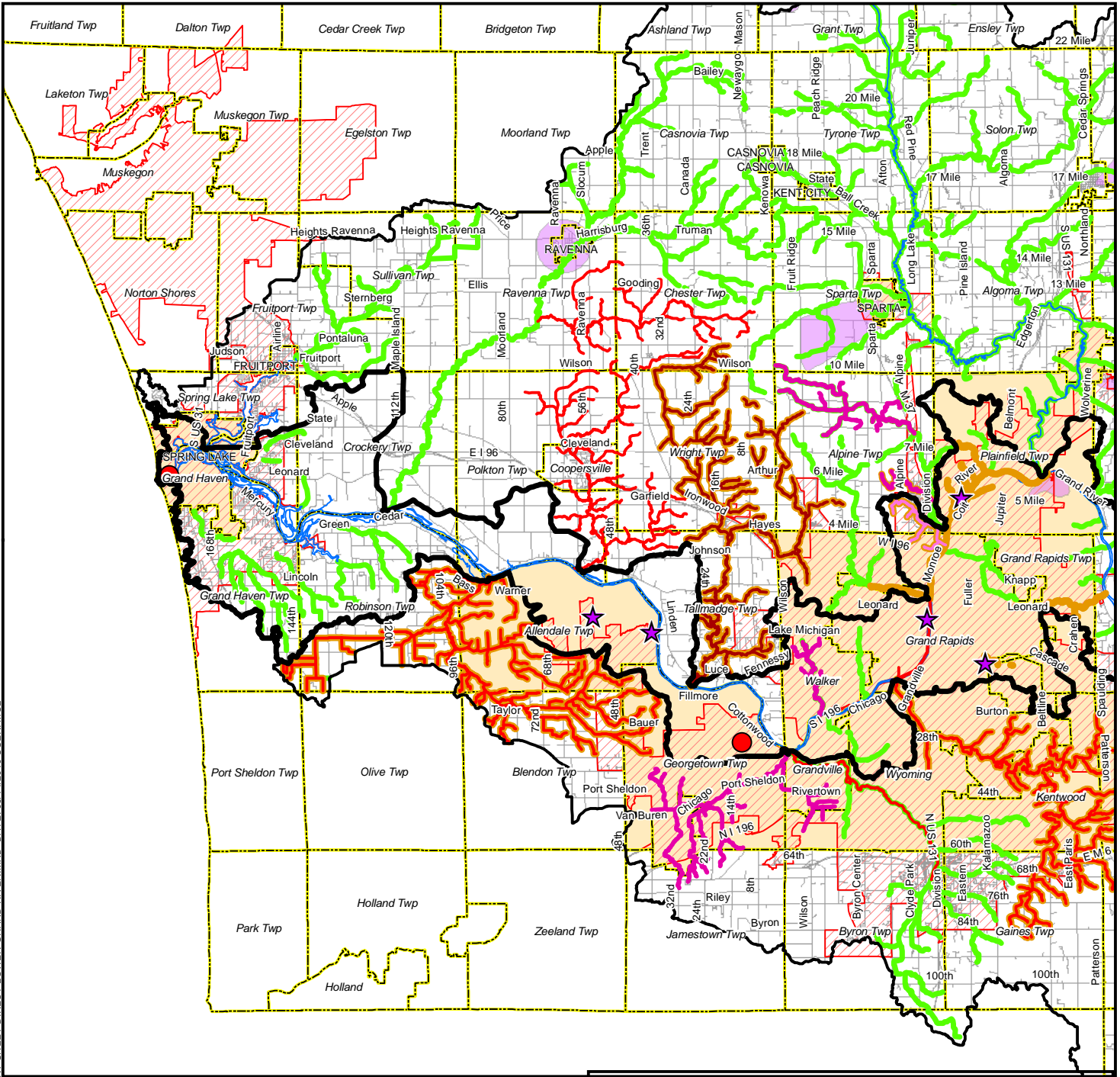


NORTH



MILES

PLOT INFO: U:\CADD\080017GIS\MAP_DOCUMENTS\SUBWATERSHED.MGMT\UNIT SUMMARY SHEET DIRECT LOWER GRAND RIVER.MXD DATE: 08/14/2010 USER: MCL



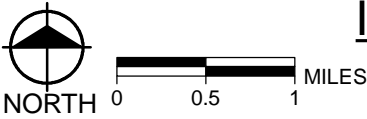
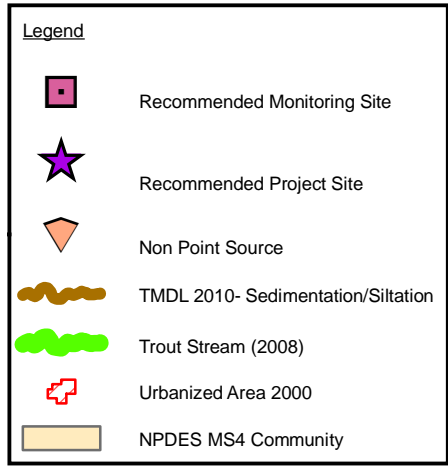
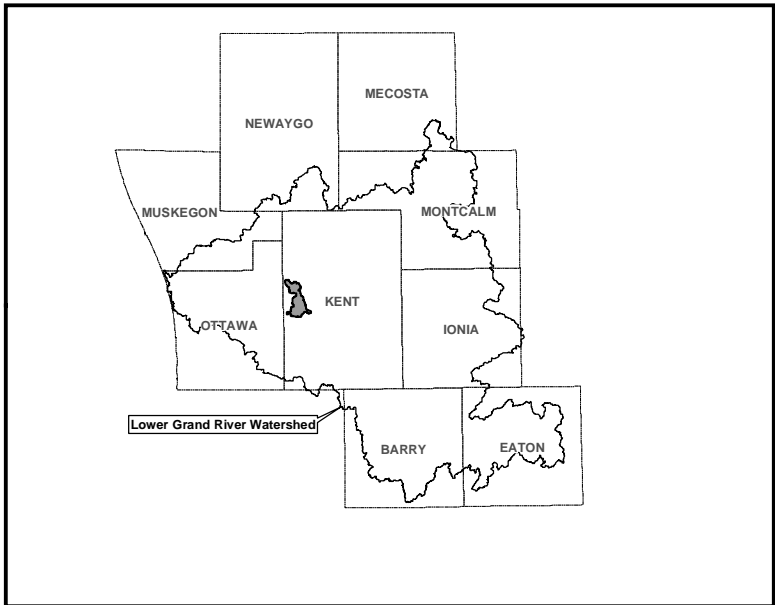
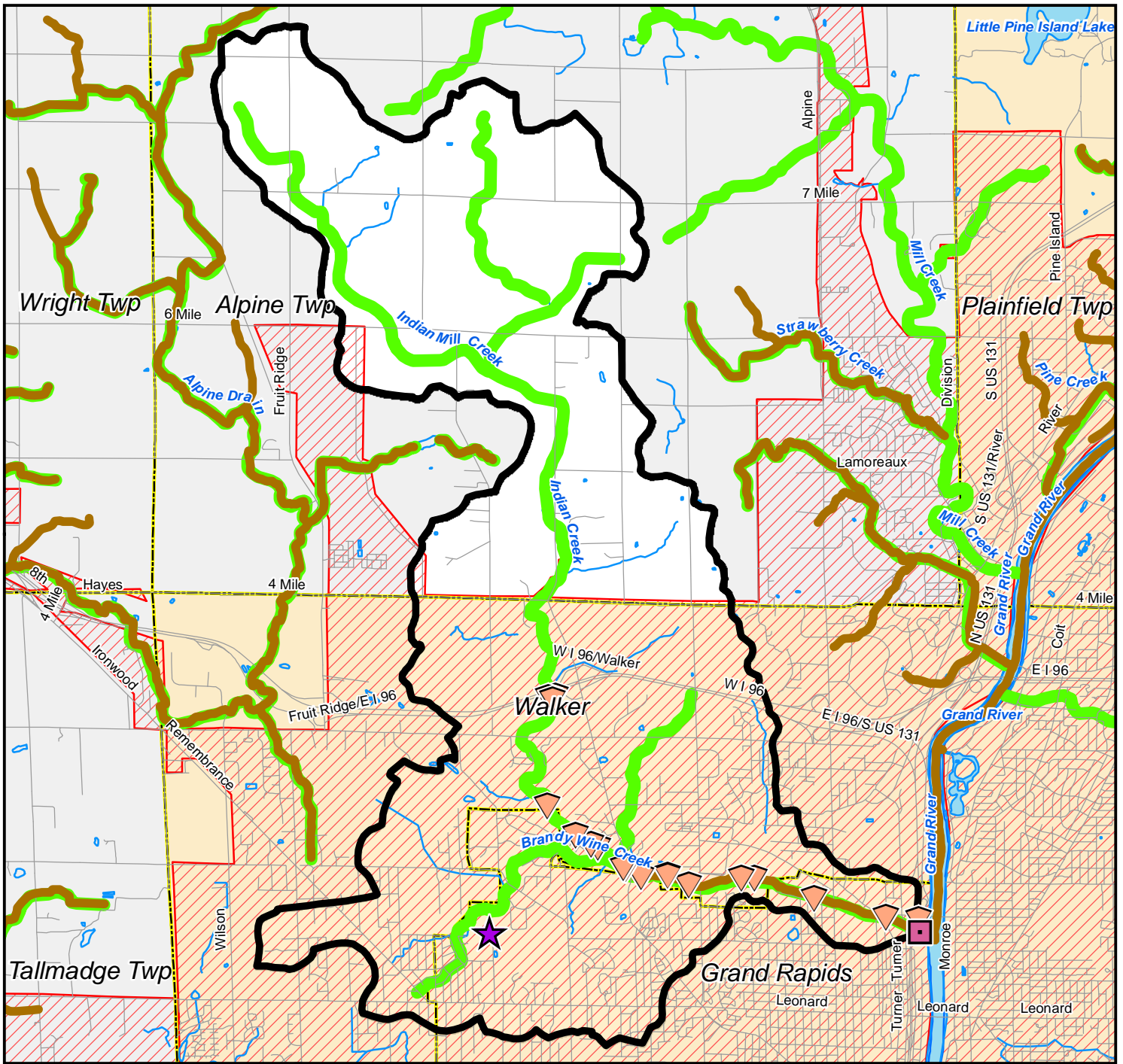
Legend

- ★ Recommended Project Site
- TMDL Escherichia coli
- ~ TMDL 2010- Escherichia coli
- ~ TMDL 2010- Alt. in Wetland Habitat
- ~ TMDL2010- Other Flow Regime Alt.
- ~ TMDL 2010- Other Anthro. Substrate
- ~ TMDL 2010- Sedimentation/Siltation
- ~ Trout Stream (2008)
- ~ Urbanized Area 2000
- ~ Wellhead Protection Area
- ~ NPDES Phase II Community

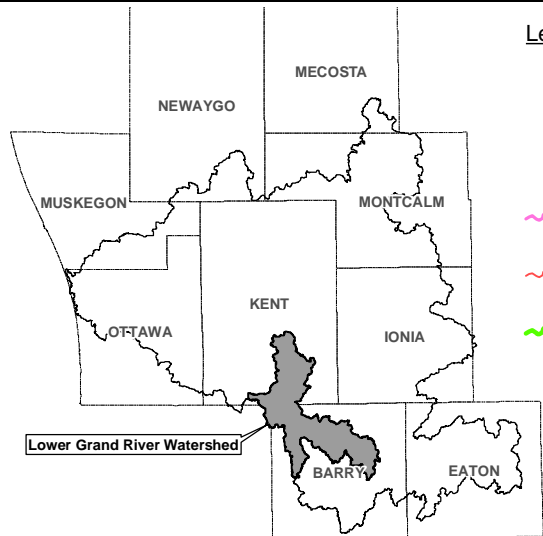
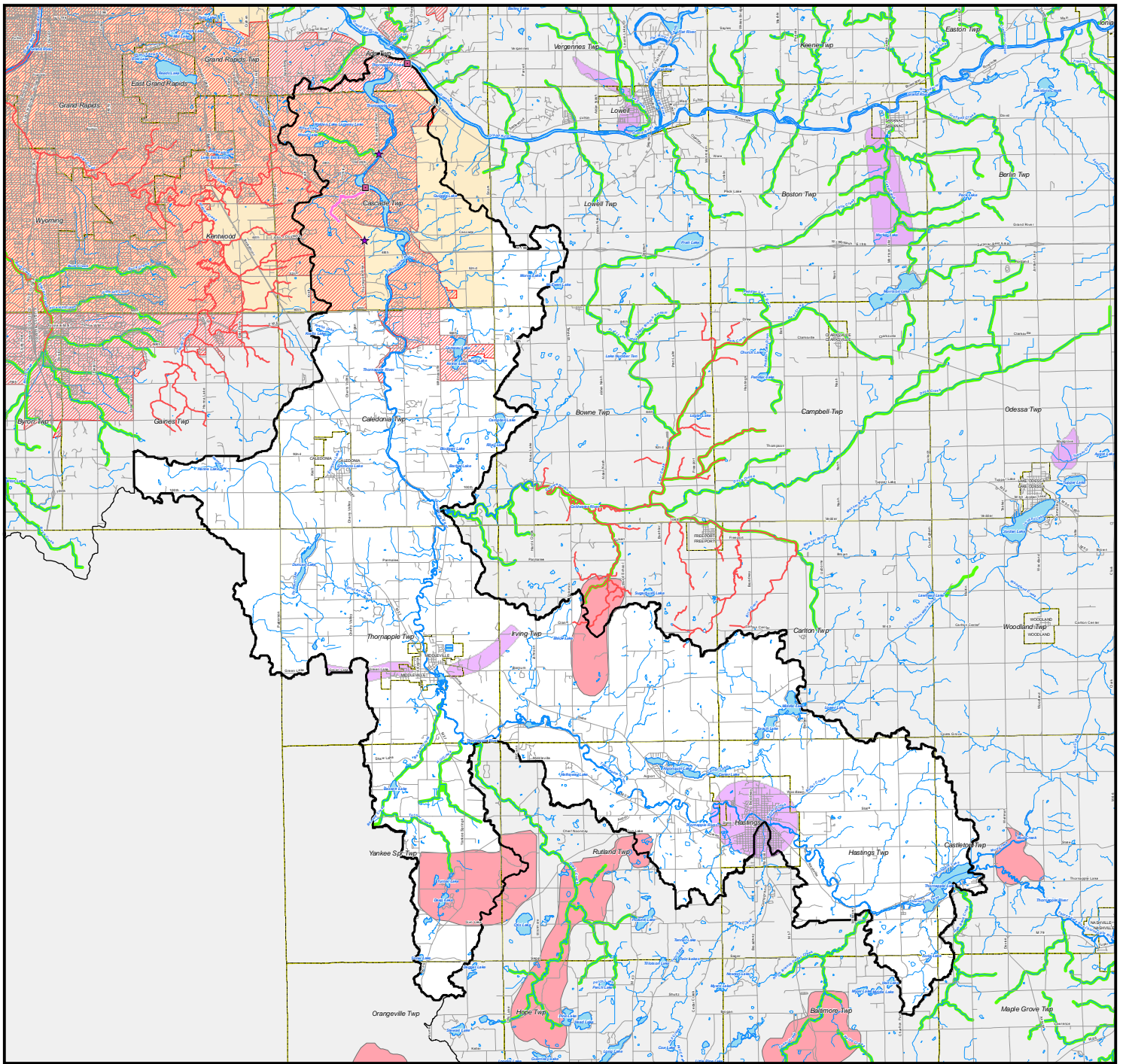
Direct Drainage West to Lower Grand River Subwatershed

NORTH










0 5 10 MILES



Indian Mill Creek Subwatershed



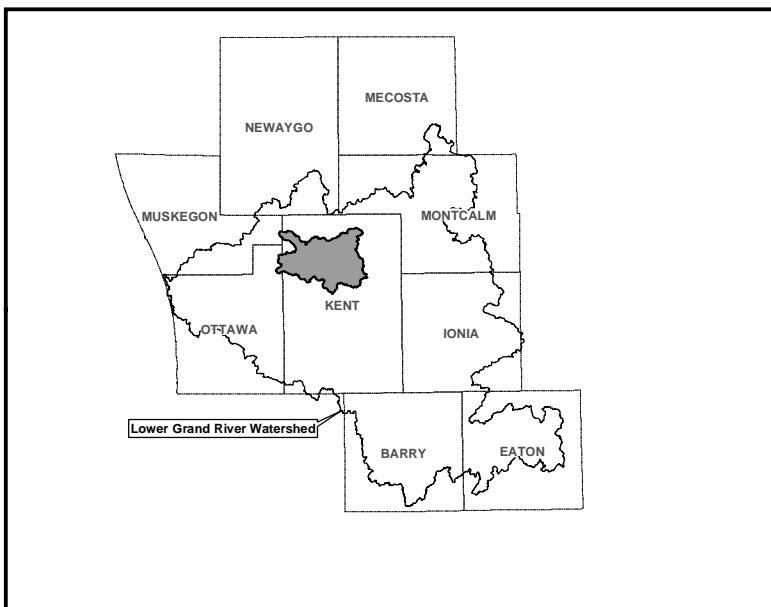
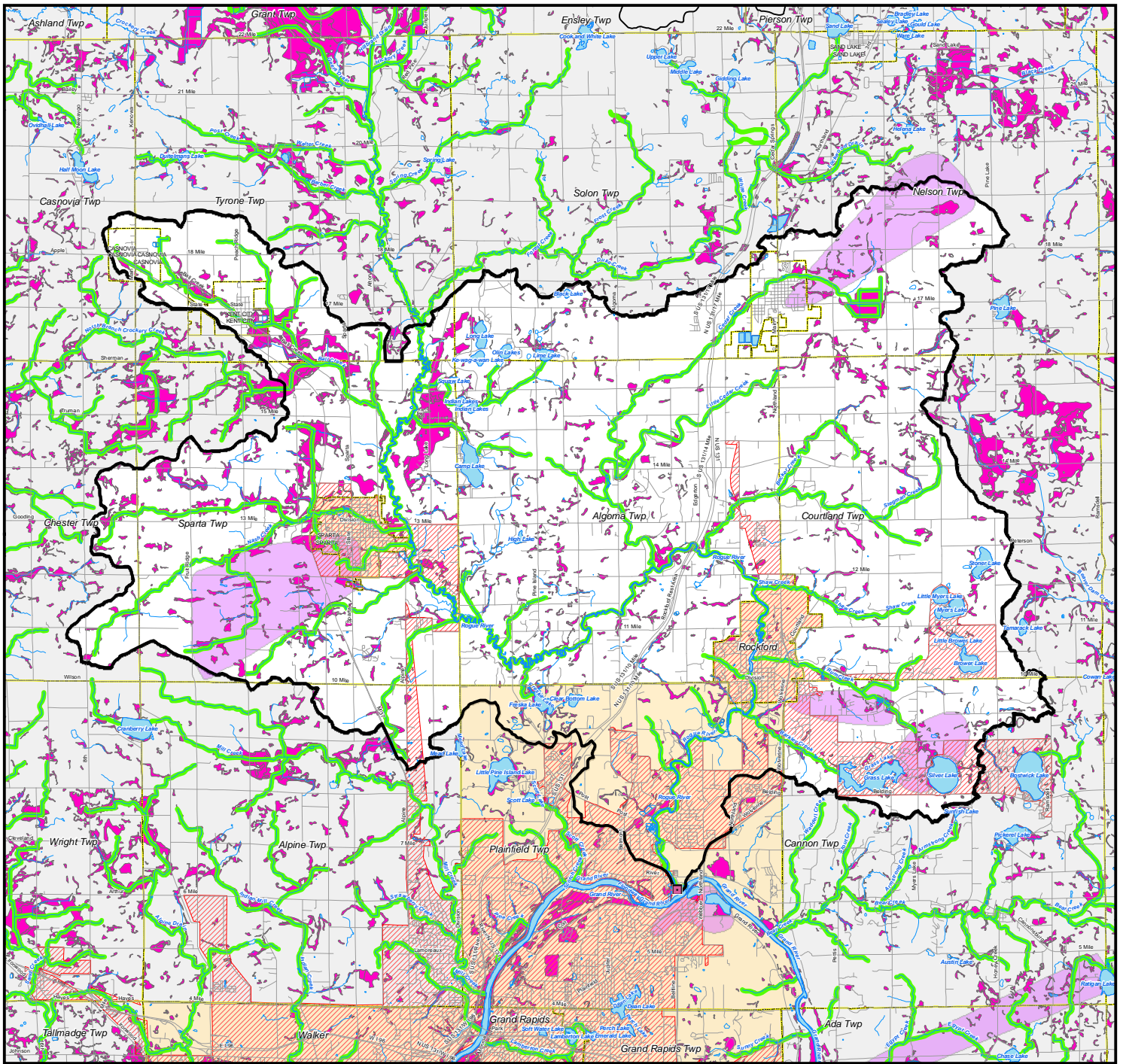
Legend

-  Recommended Monitoring Site
 -  Recommended Project Site
 -  TMDL 2016- Bacterial Slime
 -  TMDL 2010- Escherichia coli
 -  Trout Stream (2008)
 -  Urbanized Area 2000
 -  High Priority Potential Conservation Area
 -  Wellhead Protection Area
 -  NPDES MS4 Community
- * NPS Locations Not Available in Digital Format

Lower Thornapple River Subwatershed



 MILES
00.51



Legend

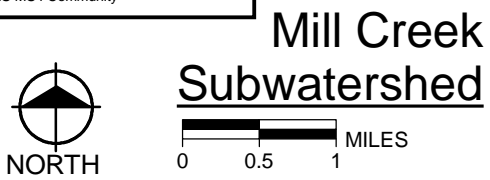
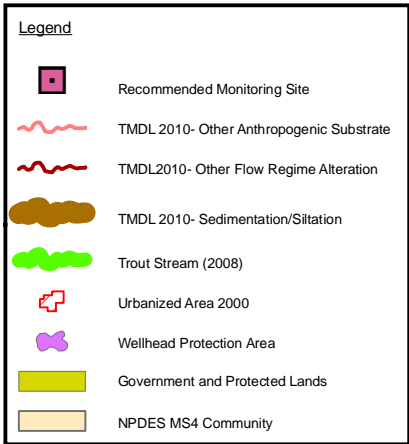
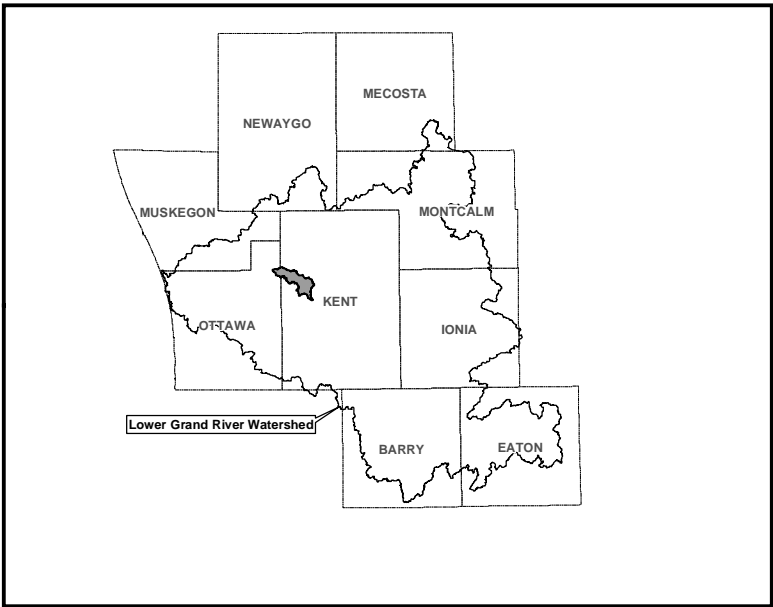
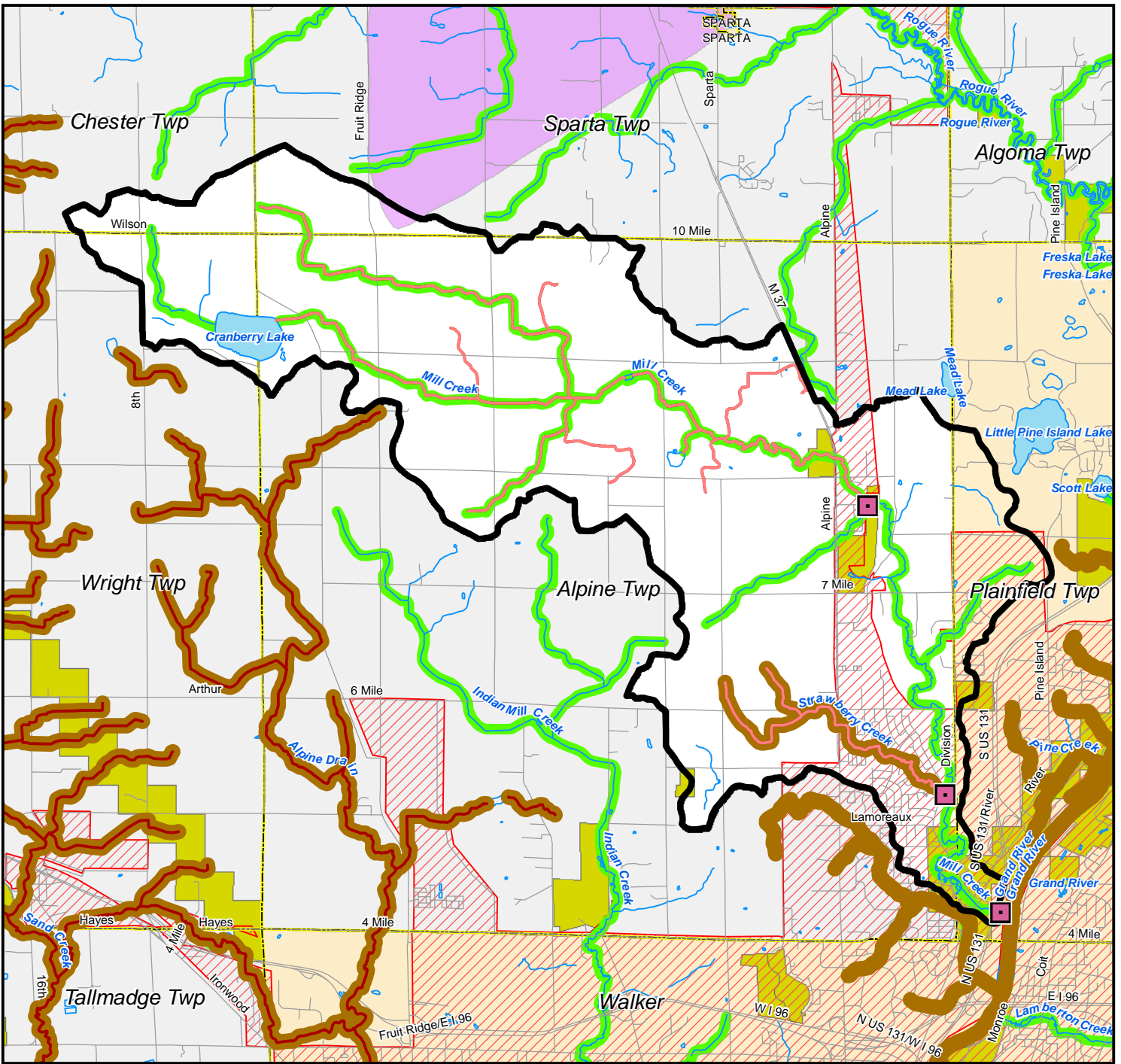
- Recommended Monitoring Site
- Trout Stream (2008)
- Urbanized Area 2000
- Potential Wetland Restoration (High)
- Wellhead Protection Area
- NPDES MS4 Community

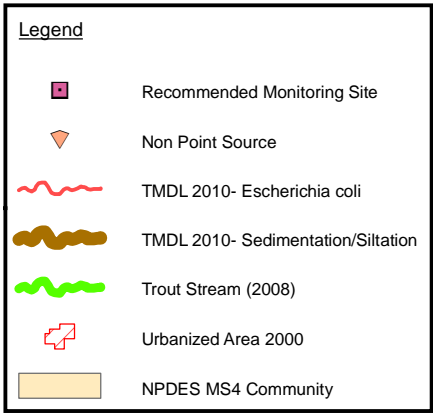
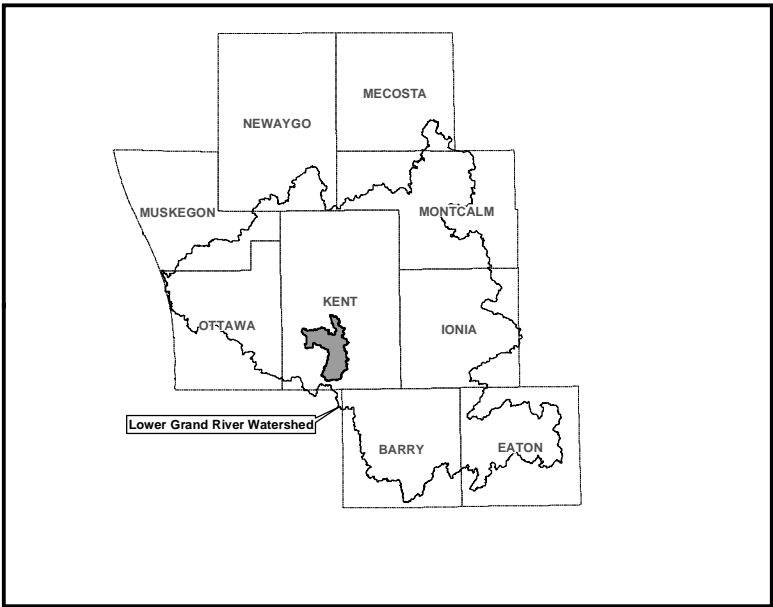
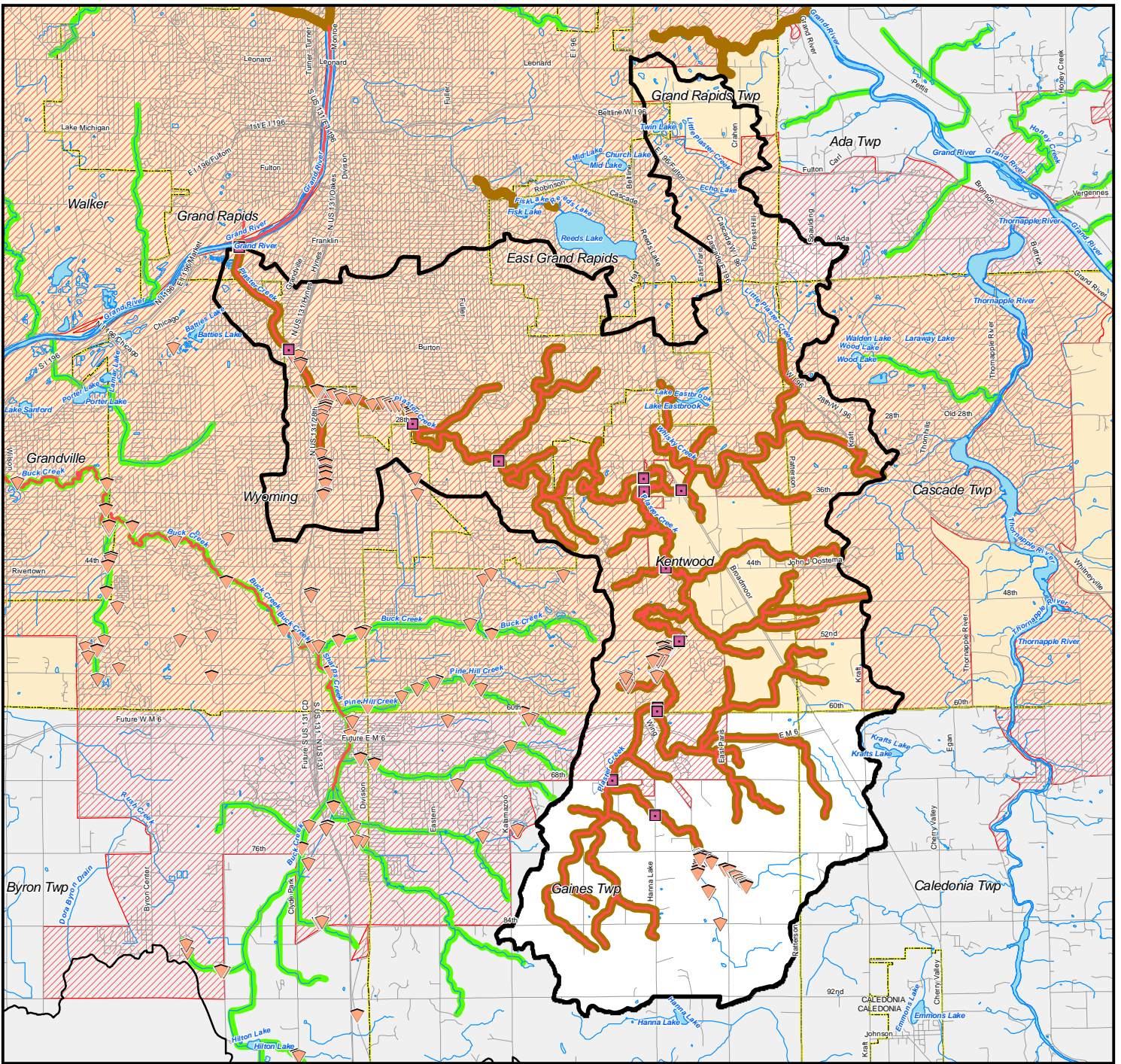
* NPS Locations Not Available in Digital Format

Lower Rogue River Subwatershed

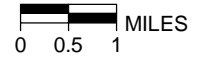


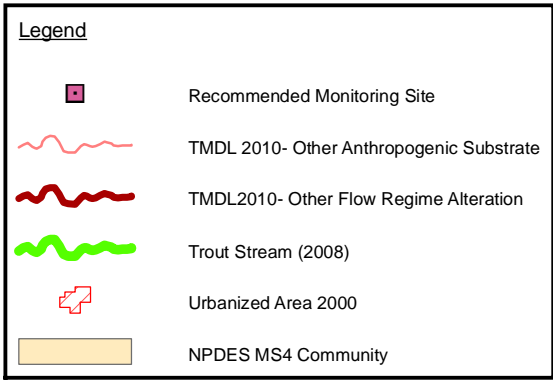
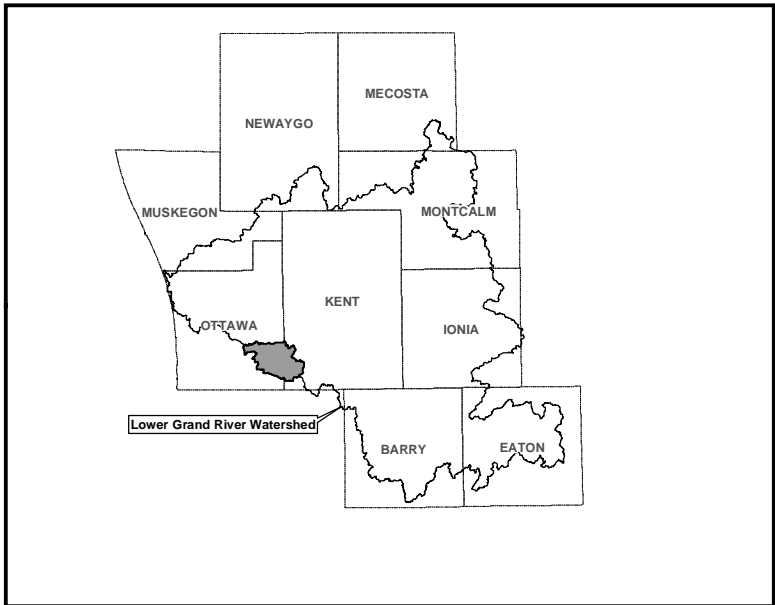
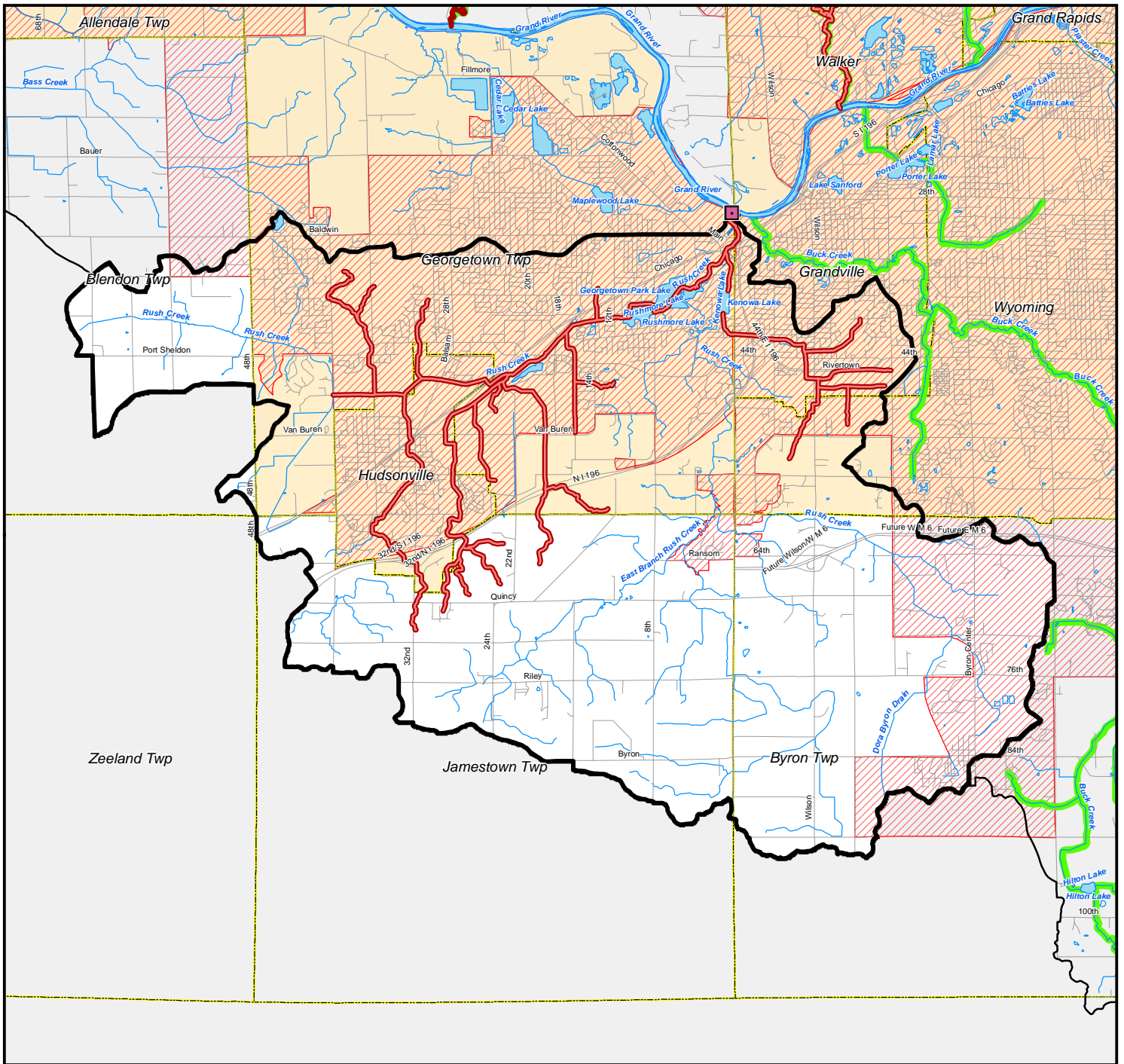
PLOT INFO: U:\CADD\080017GIS\MAP_DOCUMENTS\SUBWATERSHED\MGMT UNIT SUMMARY SHEET.MXD DATE: 06/14/2010 USER: MCL



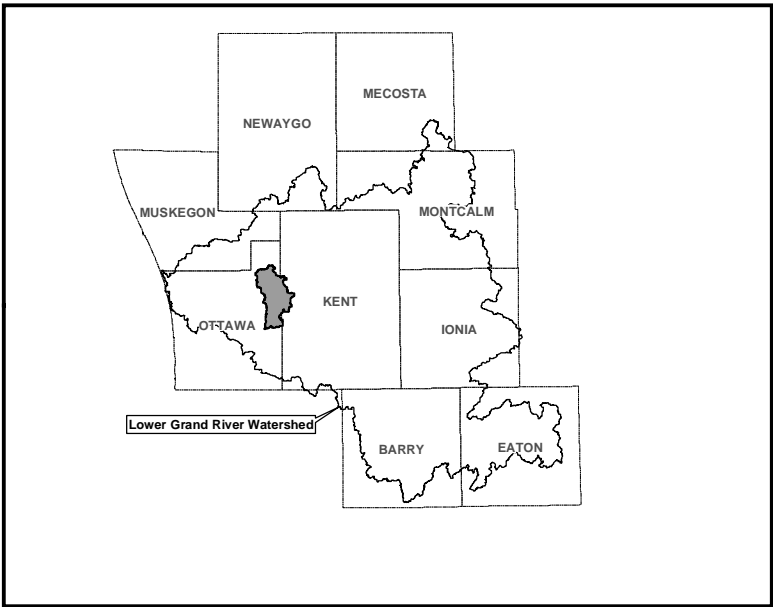
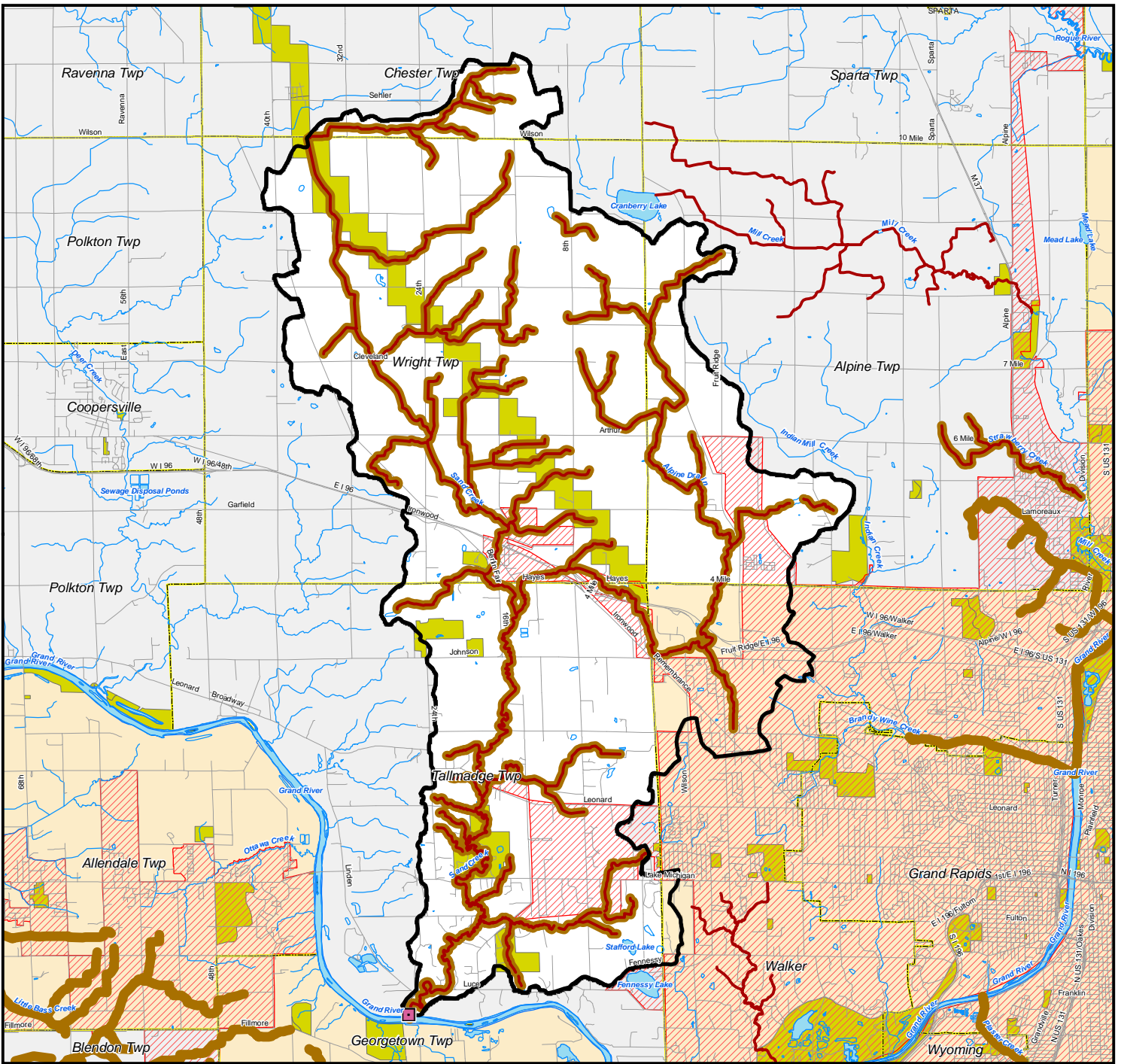


Plaster Creek Subwatershed











PLOT INFO: U:\CADD\080017GIS\MAP_DOCUMENTS\SUBWATERSHED_MGMT_UNIT_SUMMARY_SHEET.MXD DATE: 06/14/2010 USER: MCL



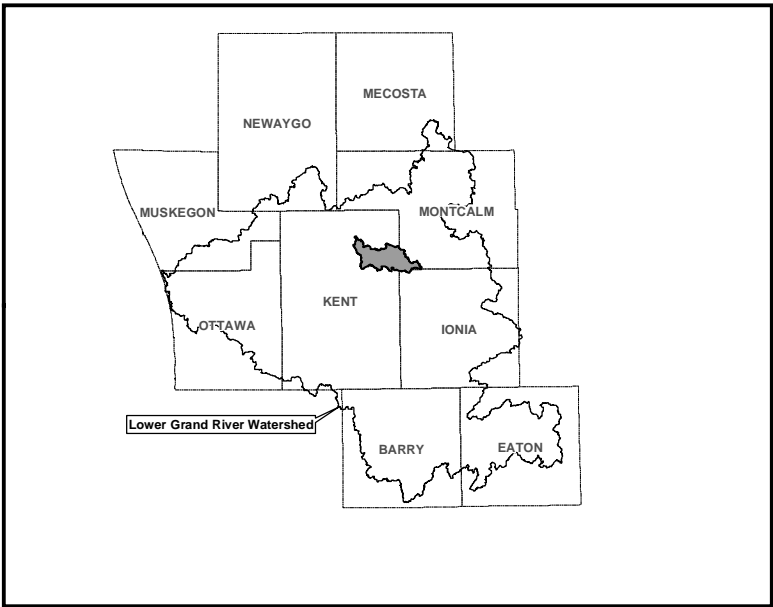
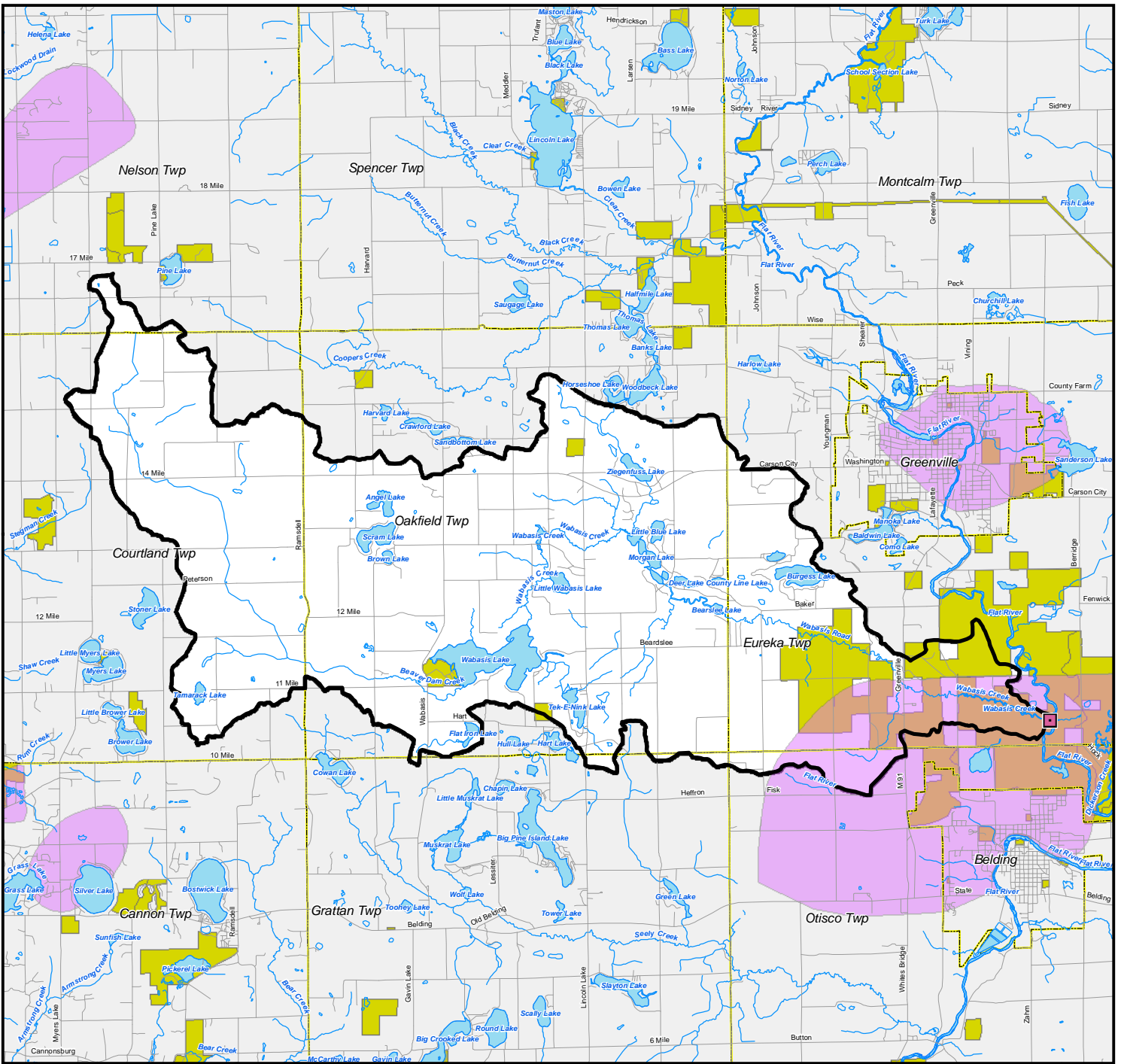
Legend

-  Recommended Monitoring Site
-  TMDL2010- Other Flow Regime Alteration
-  TMDL 2010- Sedimentation/Siltation
-  Urbanized Area 2000
-  Government and Protected Lands
-  NPDES MS4 Community

* NPS Locations Not Available in Digital Format

Sand Creek Subwatershed





Legend

- Recommended Monitoring Site
- Wellhead Protection Area
- Government and Protected Lands

Wabasis and Beaver Dam Creek Subwatershed

