



## Downloading and Installing NIS-Elements 4.00 AR and BR

### **Getting Started: A Glossary of terms**

- Version: A Major Release (2.0, 2.1, 2.2, 2.3, 3.0, 3.1, 3.2, 4.0).
  - We are currently at the 4.00.07 Release
- Build: Software is written and compiled often. Each compiled set is called a “build.” You will see the build numbers increase in jumps. There can be a number of different builds per Version.
  - **We are currently at Build 787.**
- Local Option: drivers and modules released specifically for our market
- Hot Fix: small patches written to solve one specific problem
- Service Pack: A full set of software updates. Running a Service Pack will update the system with all of the incremental updates that are occasionally released called “Hot Fixes” and all of the previous Service Packs released within this version.

### **Access Point for Software Downloads:**

<http://www.nissoftware.net/NikonSaleApplication/>

User Name: YOUR NAME (i.e. J. Doe)

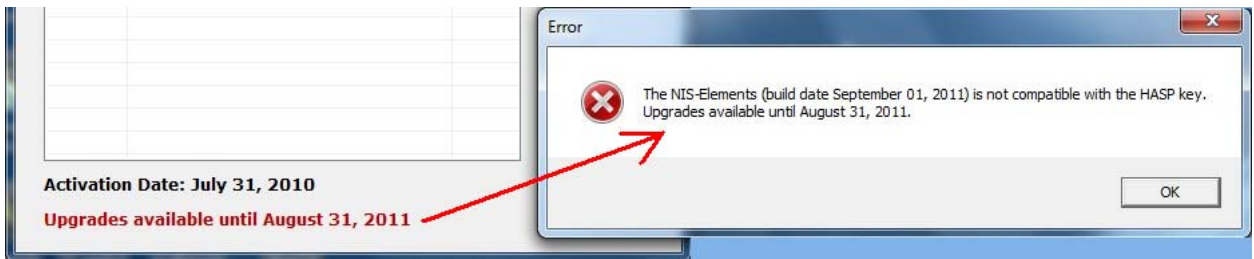
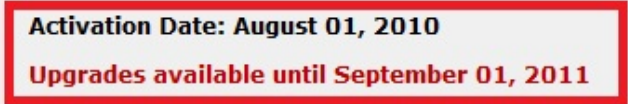
Password: YOUR HASP key #

**Before Installing:**

1. Make sure your computer is running an activated copy of Windows Vista Business or Windows 7 Professional or Higher. (NIS-Elements™ Version 4.0 will not install under Windows XP or unauthorized copies of Windows Vista and Windows 7)



2. If you are upgrading an existing NIS install, check the HASP Info of the HASP key for “**Upgrades available until...**” This must be **September 01, 2011** or later or NIS-Elements will not run.



If you have a date earlier than **September 01, 2011**, please contact your sales representative about extending your Service User Agreement.

## Install files you will see on website after logging in:



### Files to download

[Details on what each directory contains.htm](#)



For a NIS-Elements AR or BR install, please download:

NIS\_4.00\_b787\_32bit.zip for 32 bit PCs.

NIS\_4.00\_b787\_64bit.zip for 64 bit PCs.

### **For new installs:**

'NIS\_4.00\_b787\_32bit.zip' is a complete install file for 32 bit PCs.

'NIS\_4.00\_b787\_64bit.zip' is a complete install file for 64 bit PCs.

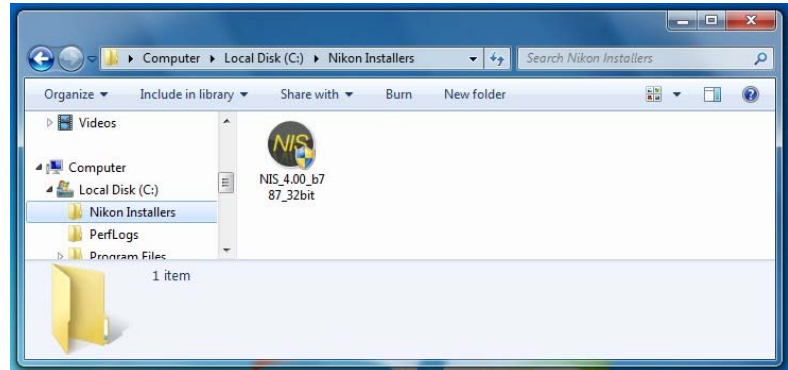
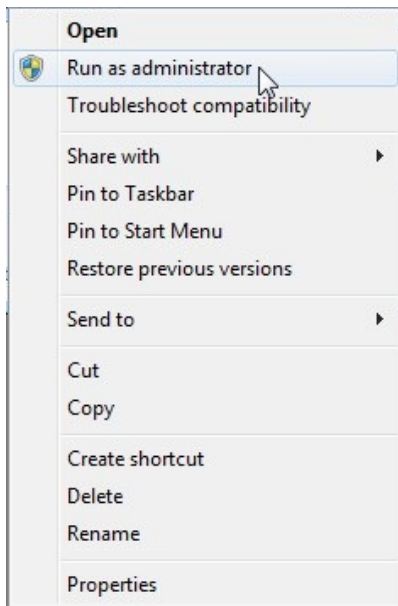
### **For updating a previous install:**

It is recommended to:

- ✓ backup any images and/or optical configurations
  - If updating from build 616 or higher, the **NIS-Elements™ Settings Backup Utility** can be used.
- ✓ uninstall any older installations following the 'Clean uninstall procedure' outlined in the file:
  - 'How\_To\_Uninstall\_NIS-Elements\_0017.pdf' – for Windows Vista 32 and 64
- ✓ install using 'NIS\_4.00\_b787\_32bit.exe' file for 32 bit PCs.
- ✓ install using 'NIS\_4.00\_b787\_64bit.exe' file for 64 bit PCs.

## **Install Instructions:**

1. Make sure no other versions of NIS-Elements are currently running on your computer.
2. DO NOT Plug Purple HASP key into computer<sup>1</sup>. With Ver. 4.00.07, there is a HASP update routine. You will be asked to insert key later in the install.
3. Start the installation process by right-clicking on the icon of the 'NIS\_4.00\_b787\_32bit.exe' file or 'NIS\_4.00\_b787\_64bit.exe' file and selecting 'Run as administrator.'



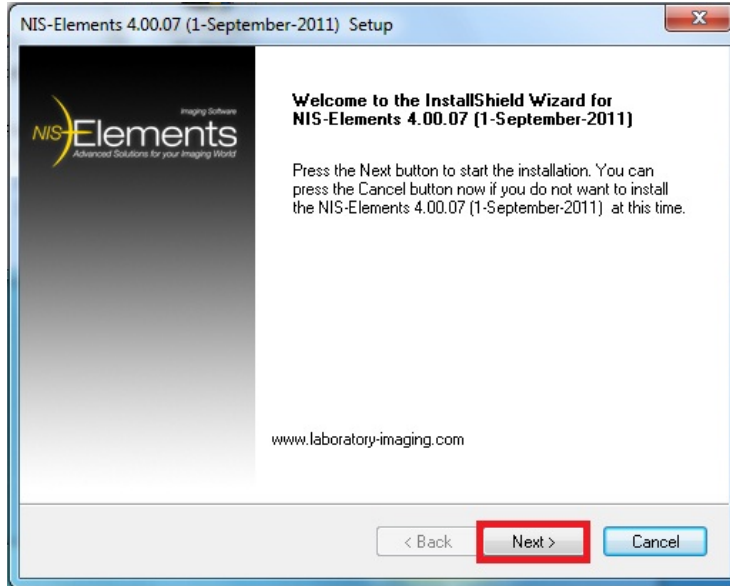
Note: Best practice would be to copy the installer file to a 'Public' directory such as "C:\Nikon Installers" so that When Modify or Repair is needed the installer is located automatically.

4. If User Account Control (UAC) is enabled, a Security Warning will appear, select 'Allow.'

---

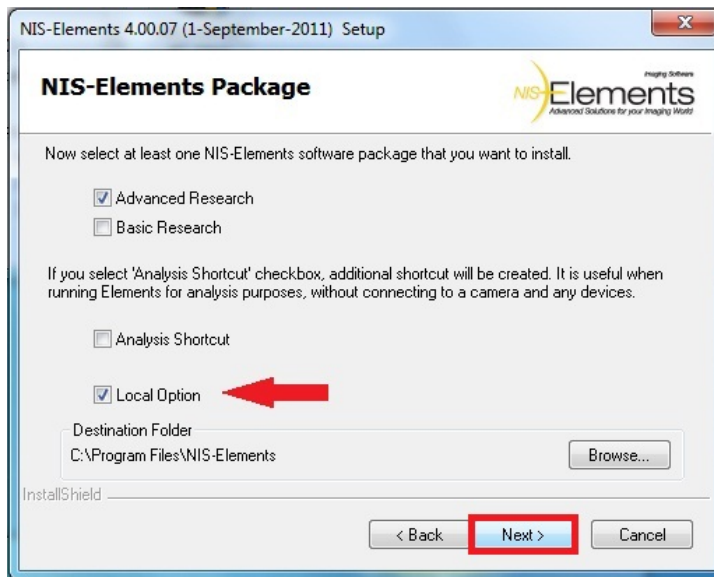
<sup>1</sup> Older parallel port keys and longer HASP keys will not work with this version. Please contact your sales person so Nikon Instruments Inc. can provide you with a replacement key.

5. A Welcome Screen will display the version and build of the software that will install. Select 'Next.'



Select 'Next.'

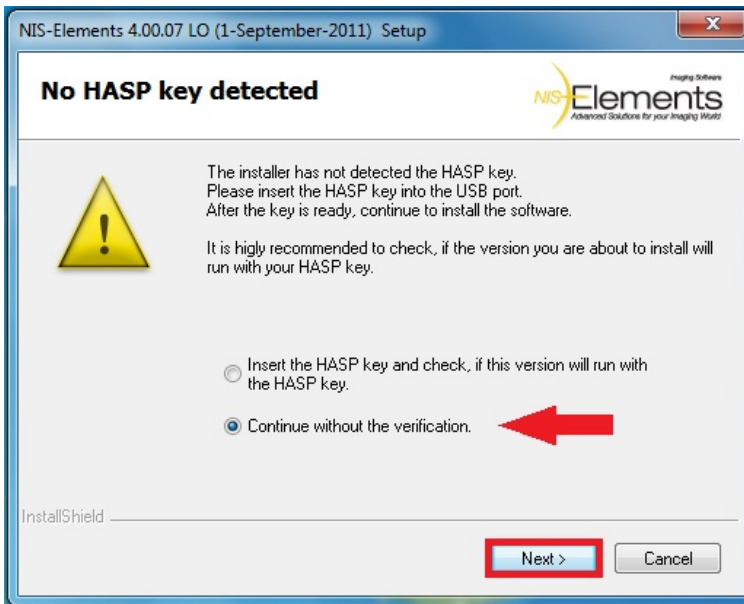
6. Select which NIS-Elements Package(s) to install.  
*Note:*<sup>2</sup> It is recommended to select 'Local Option' in order to have access to all available functions and dialogs.



Select 'Next.'

<sup>2</sup> Local Options are driver or module options that are available for the North American, Latin American and European Market. They are purchased directly from Laboratory Imaging.

7. If this is the first time installing version 4.00.07, you will then see the following.



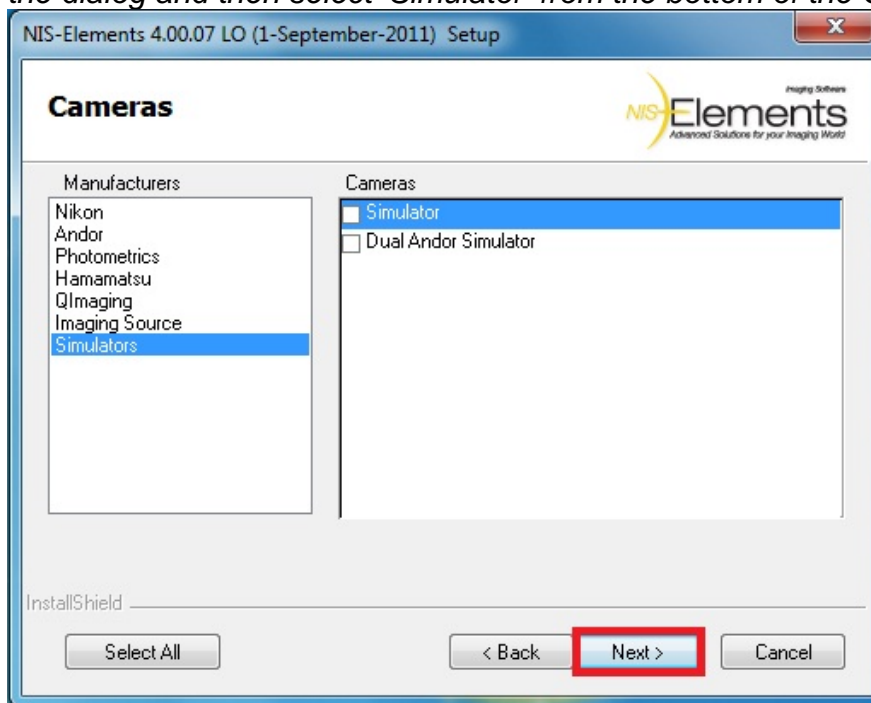
At this point NIS-Elements will ask to insert the Purple HASP key into computer. Do not insert now and select “Continue without the verification”. HASP will be plugged in after installation is complete.



Select 'Next.'

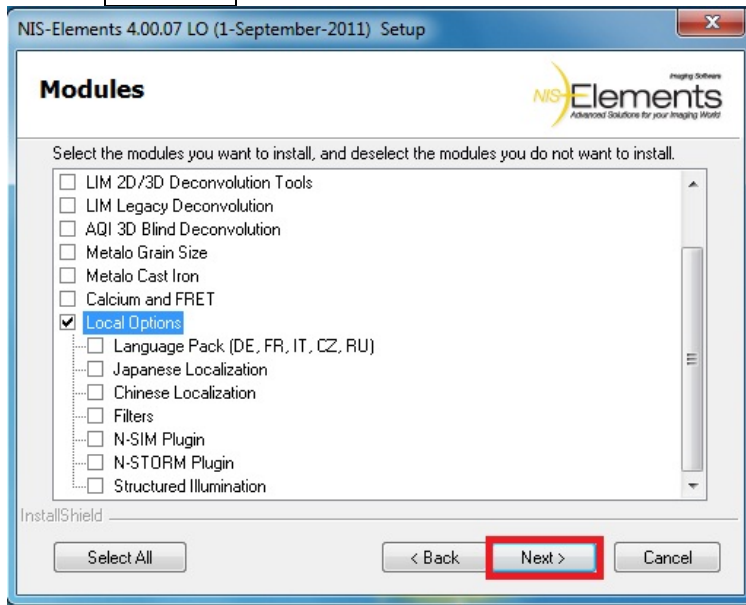
8. Select **Camera** drivers to install.

*Note: To select a Camera Simulator, select 'Simulators' on the left hand side of the dialog and then select 'Simulator' from the bottom of the Cameras list.*



Select 'Next.'

9. Select **Modules**<sup>3</sup> to install.

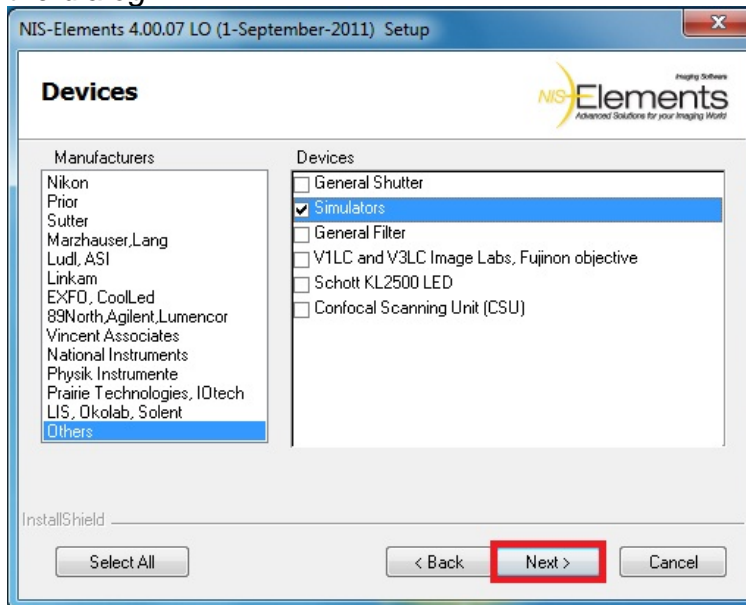


Select 'Next.'

10. Select **Devices** based on Manufacturer:

Devices are listed by Manufacturer.

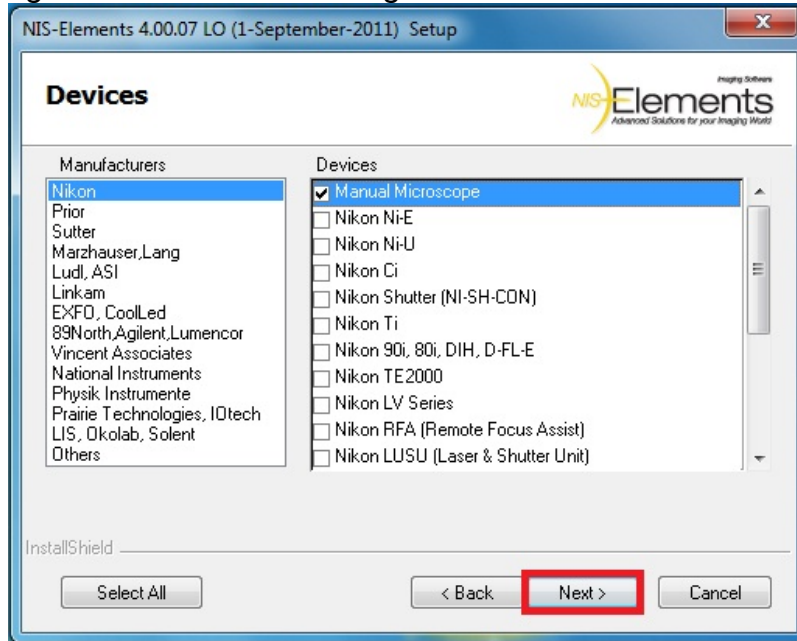
*Note: To select Device Simulators, select 'Others' on the left hand side of the dialog and then select 'Simulators' from the Devices list on the right hand side of the dialog.*



Select 'Next.'

<sup>3</sup> Note: Modules are additional for pay options. The module will only be available in NIS-Elements if the HASP key is coded for the module. Checking the module in this step will not cause any errors if the HASP key is not coded for the module.

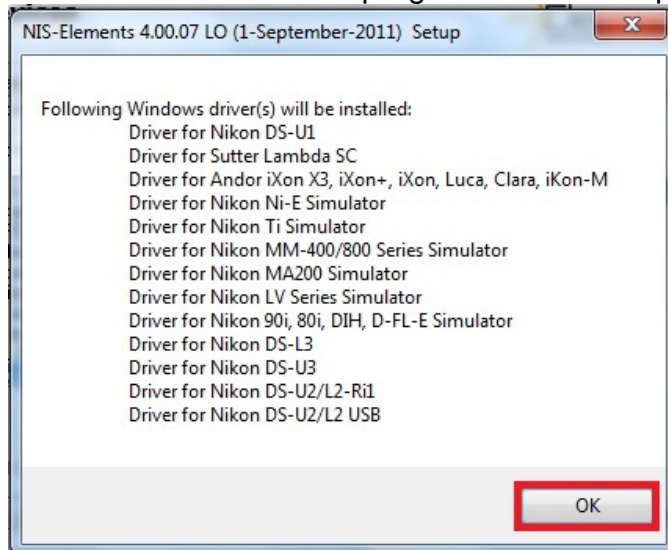
*Note: To select the Manual Microscope, select 'Nikon' on the left hand side of the dialog and then select 'Manual Microscope' from the top of the Devices list on the right hand side of the dialog.*



Select 'Next.'

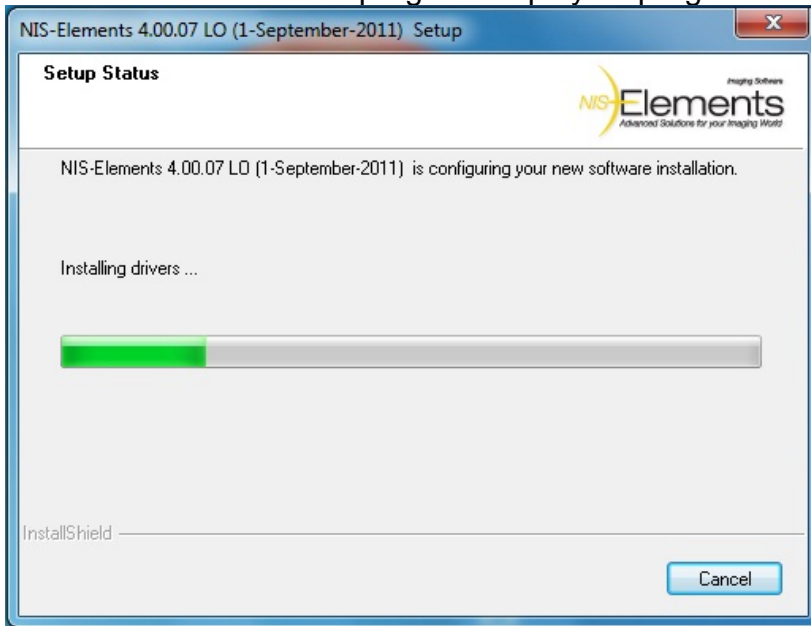
At this point the installer may ask if the FTDI drivers for Sutter and/or Prior are to be installed. Select 'Yes.'

11. The InstallShield Wizard program will then display a list of drivers to be installed.





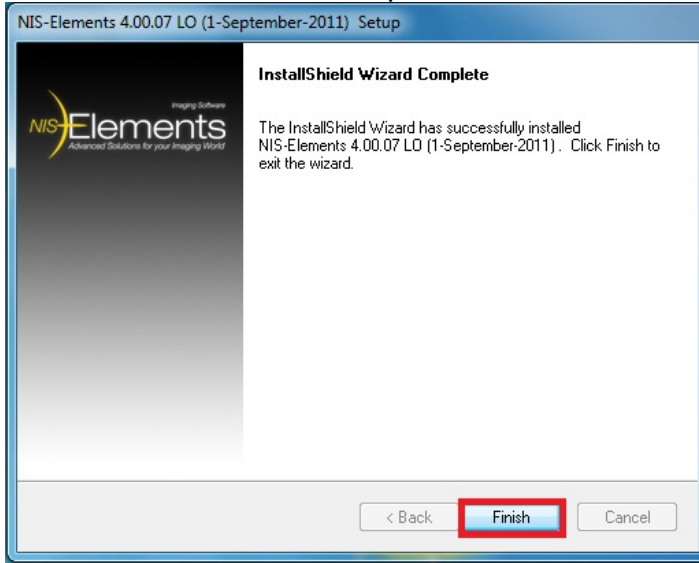
12. The InstallShield Wizard program displays a progress meter of the install.



During this time warnings about compatibility of drivers may appear such as the following. Please select 'Allow' or 'Install.'

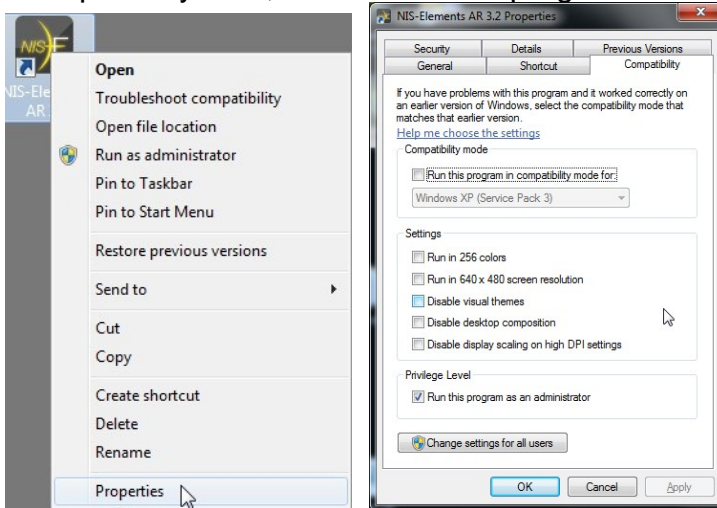


13. After the installation is complete, a confirmation screen will appear.



Select 'Finish.'

14. The shortcut for NIS-Elements then needs to be set to 'Run as administrator.' Right-click on the Shortcut icon and select 'Properties.' Then under the 'Compatibility' Tab, check 'Run this program as an administrator' and click 'OK.'



15. Plug in the HASP key now.



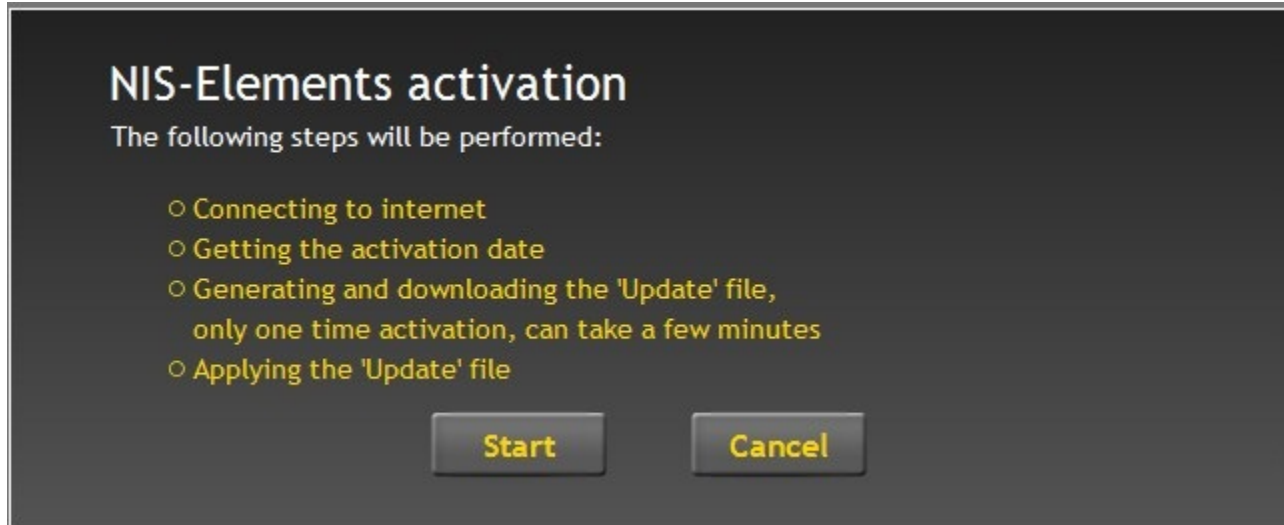
This will bring the software package up to Build 787.

- Run NIS-Elements.
- If updating from build 616 or higher, the **NIS-Elements™ Settings Import/Export Utility** can be used. Otherwise, if you would like to import backed up Optical Configurations, Open the Calibration Menu, Select 'Optical Configurations.' Select 'Restore' and point to the back up file.
- *Note: Calibrations of the objective will appear when the software is connected to the camera.*

## **First time running NIS-Elements version 4.0 requires HASP key activation**

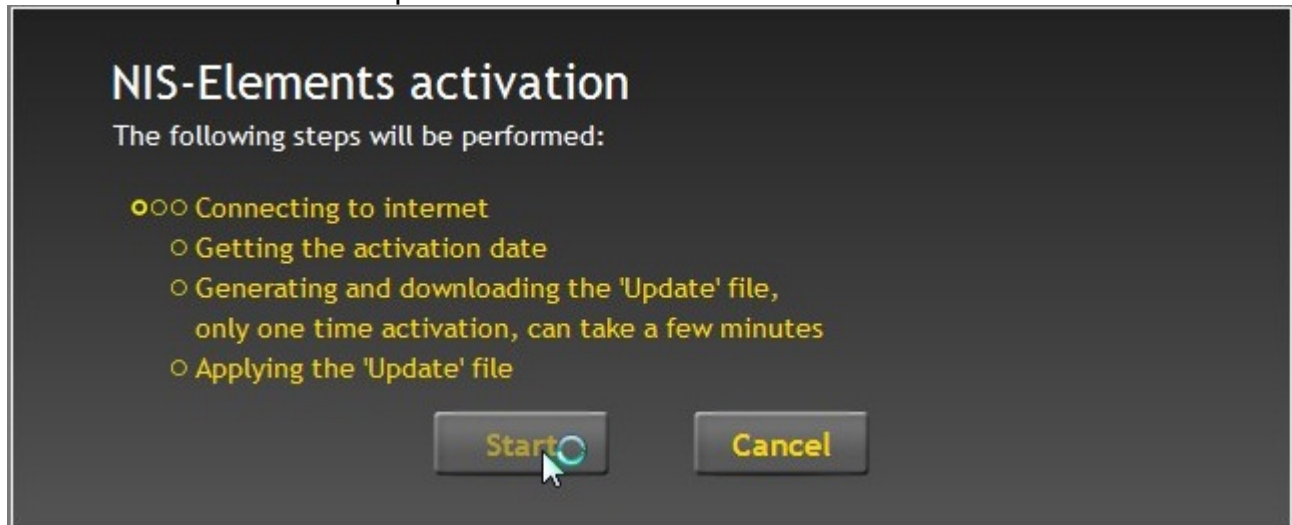
Notes:

- An internet connection to the installation PC is recommended.
- If the HASP key was previously activated through the HASP Update Utility, then these steps will be bypassed with the installer.



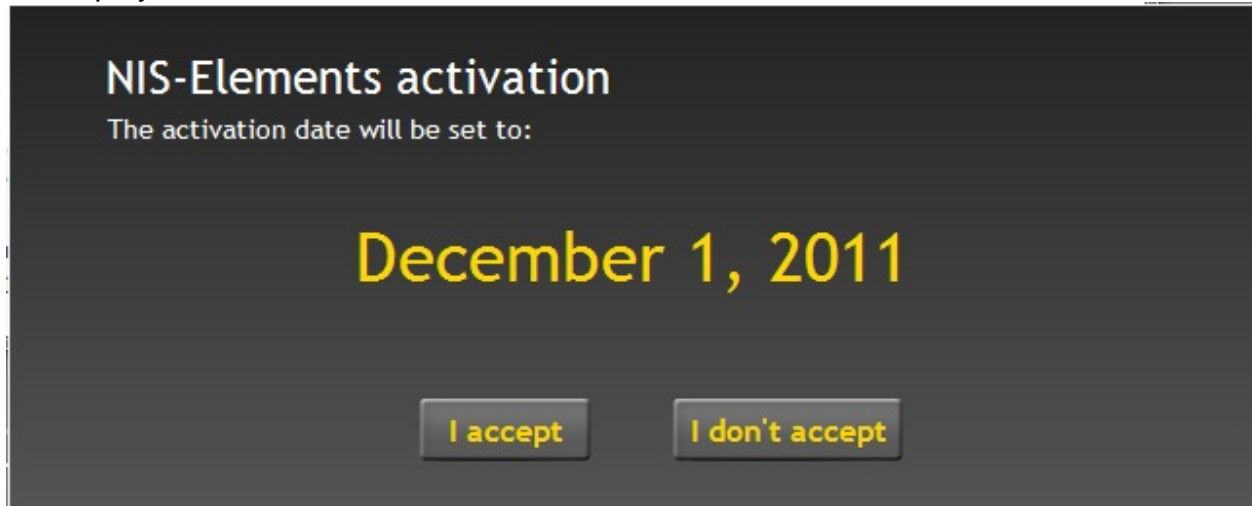
Select 'Start.'

1. NIS-Elements will attempt to connect to the Activation server.



If NIS-Elements cannot connect to the internet, please go to step 4.

2. After NIS-Elements completes the activation, the Activation time period will be displayed.

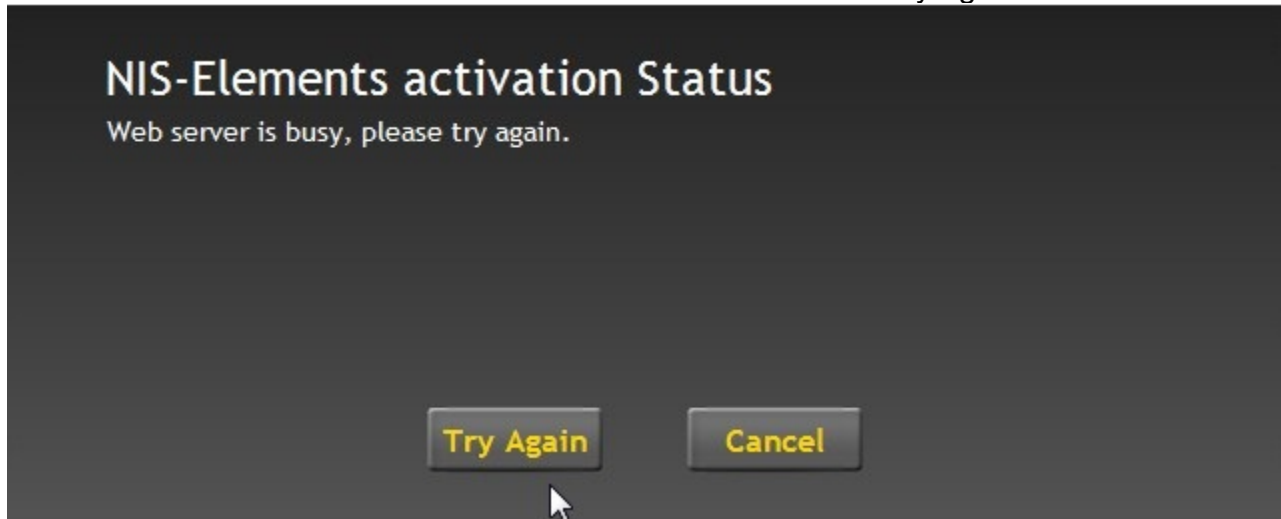


Select 'I accept'.

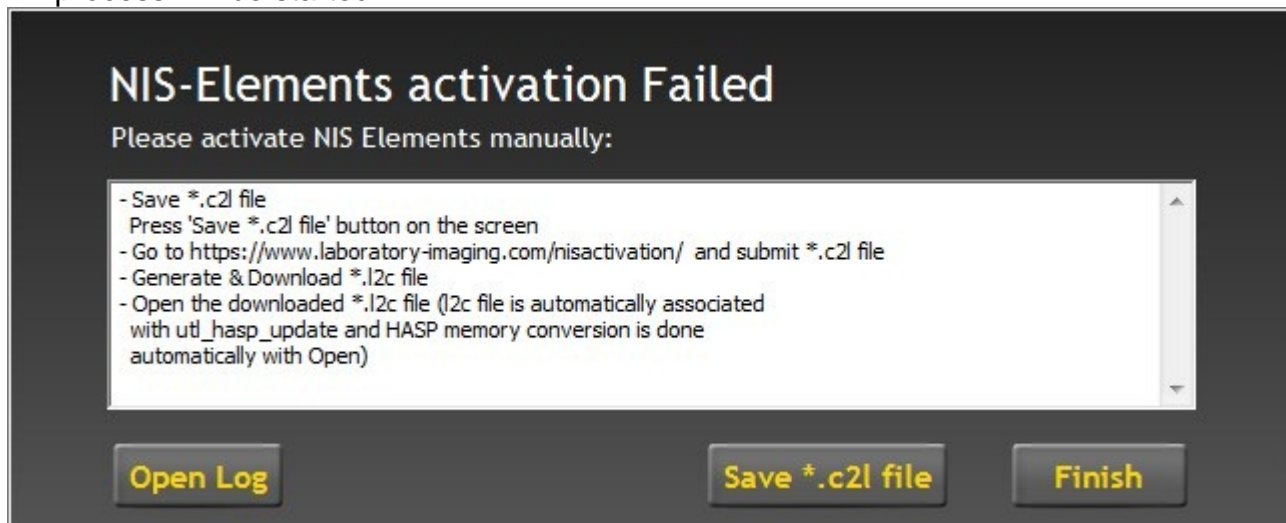
3. A confirmation screen will be displayed for 10 seconds and then NIS-Elements will automatically open.



4. If NIS-Elements is not able to connect to the server select 'Try again.'



5. After a second try if NIS-Elements still cannot connect, the manual activation process will be started.



Select 'Save \*.c2l file.'

6. Follow the instructions given to activate the HASP key and after selecting 'Finish' NIS-Elements will complete activating the HASP key and automatically Open NIS-Elements.

## **Common upgrade and install questions**

1) Can customers have Version 2.3 and/or Version 3.X running on the same computer as Version 4.0?

*Running two versions is not supported.*

*We strongly recommend **not** running two versions of NIS-Elements.*

2) Is it required to backup optical configuration when installing a new version?

*Although it is not required, it is recommended to back up optical configurations to a file somewhere on the desktop or a USB for future retrieval. It is also recommended to back up any image file that may have been saved to the program folder location. (The most common location is: C:\Program Files\NIS-Elements\Images*

3) Do we need a CD or DVD for the installation?

*You can download the install files from the Sales Application site without having to run the DVD that ships with the NIS-Elements box and HASP key. The benefit of install from the DVD is the access to several example images and datasets.*

4) How do you download/ install simulators for devices?

*The camera and device simulators are available with the Local Option install. This is an available selection from the NIS-Elements Package screen.*

